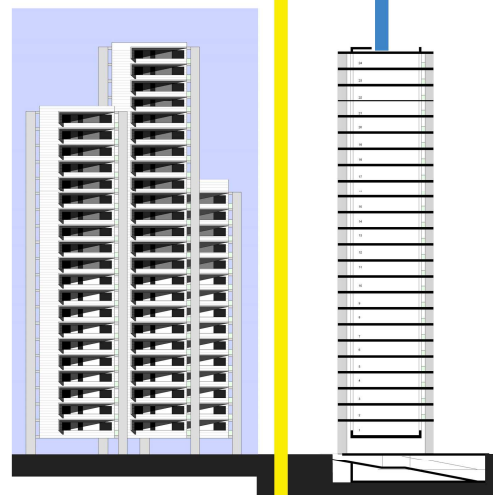
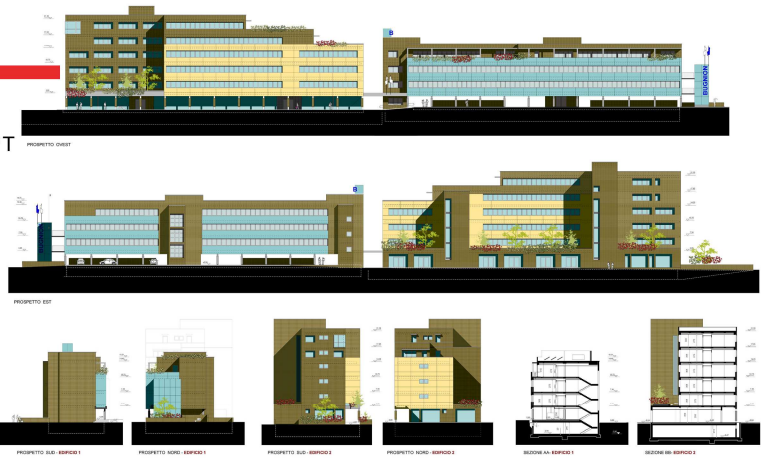
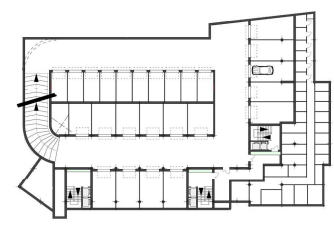
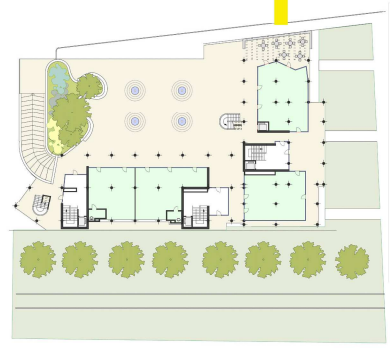


circa 6000 mq Su non residenziale  
h max 5 piani + PT

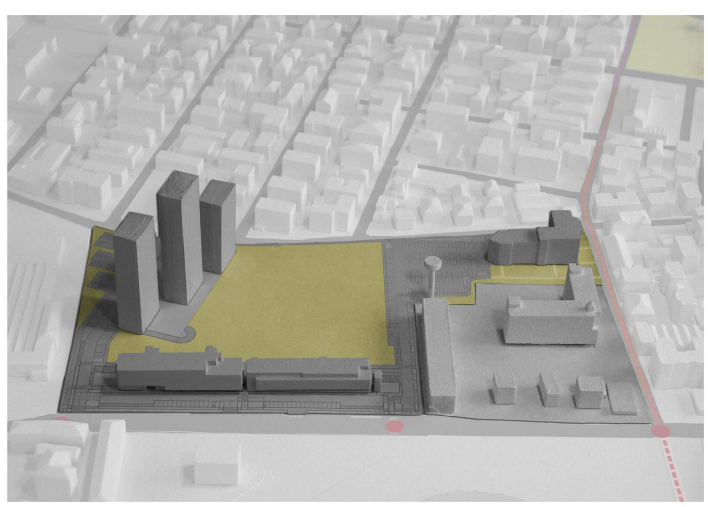


24 piani circa 83 mt  
20 piani circa 70 mt  
16 piani circa 57 mt

circa 13000 mq Su residenziale  
180 appartamenti



circa 3000 mq Su residenziale  
circa 800 mq di usi connessi



ex sasib\_ progetto novembre 2009

