

allegato 6

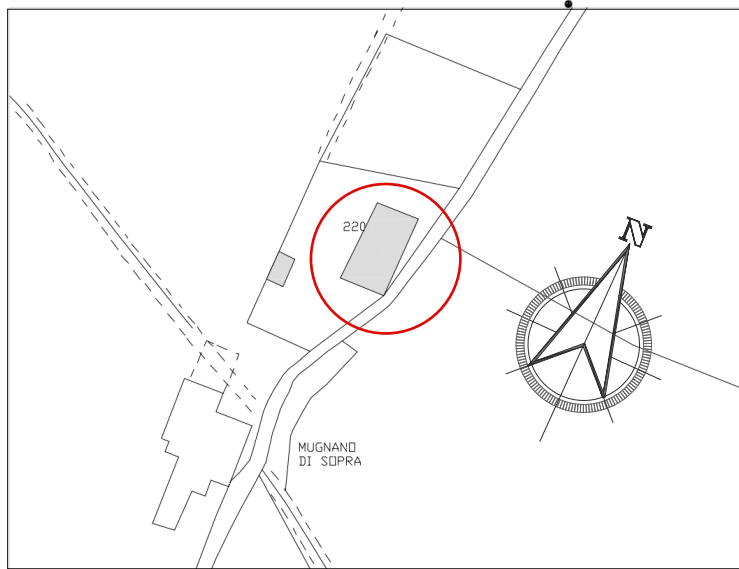
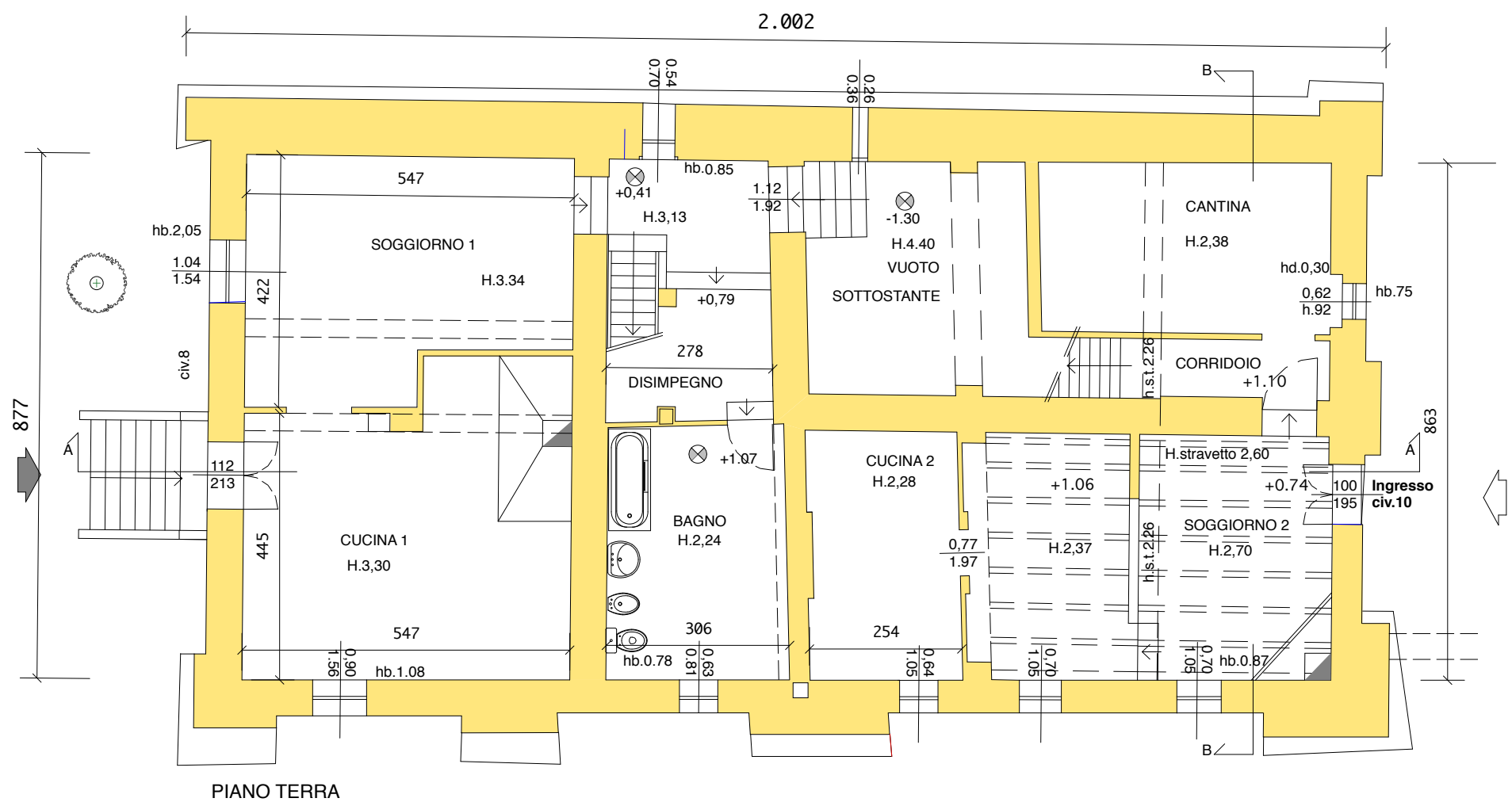
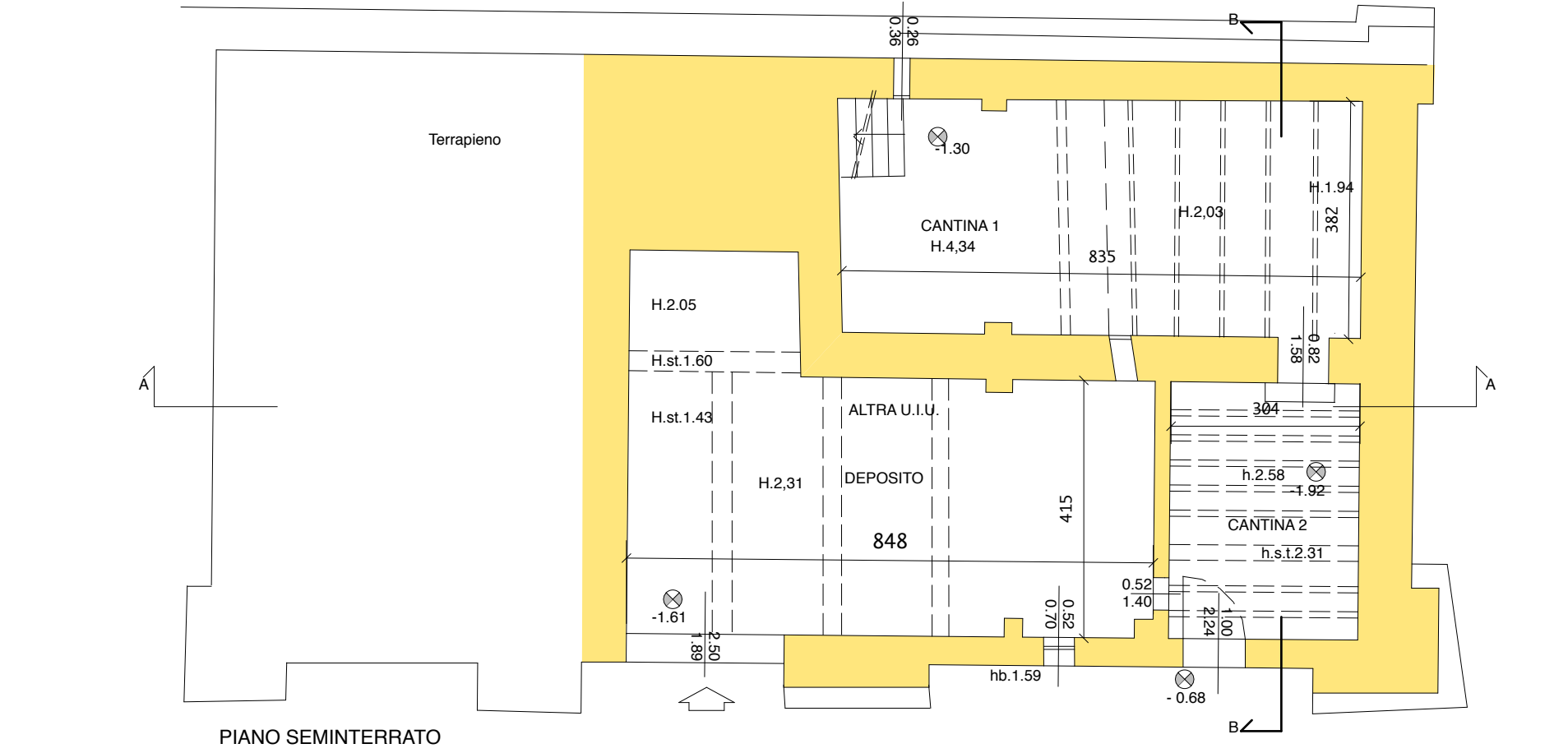
Rilievo eseguito con strumenti 2018

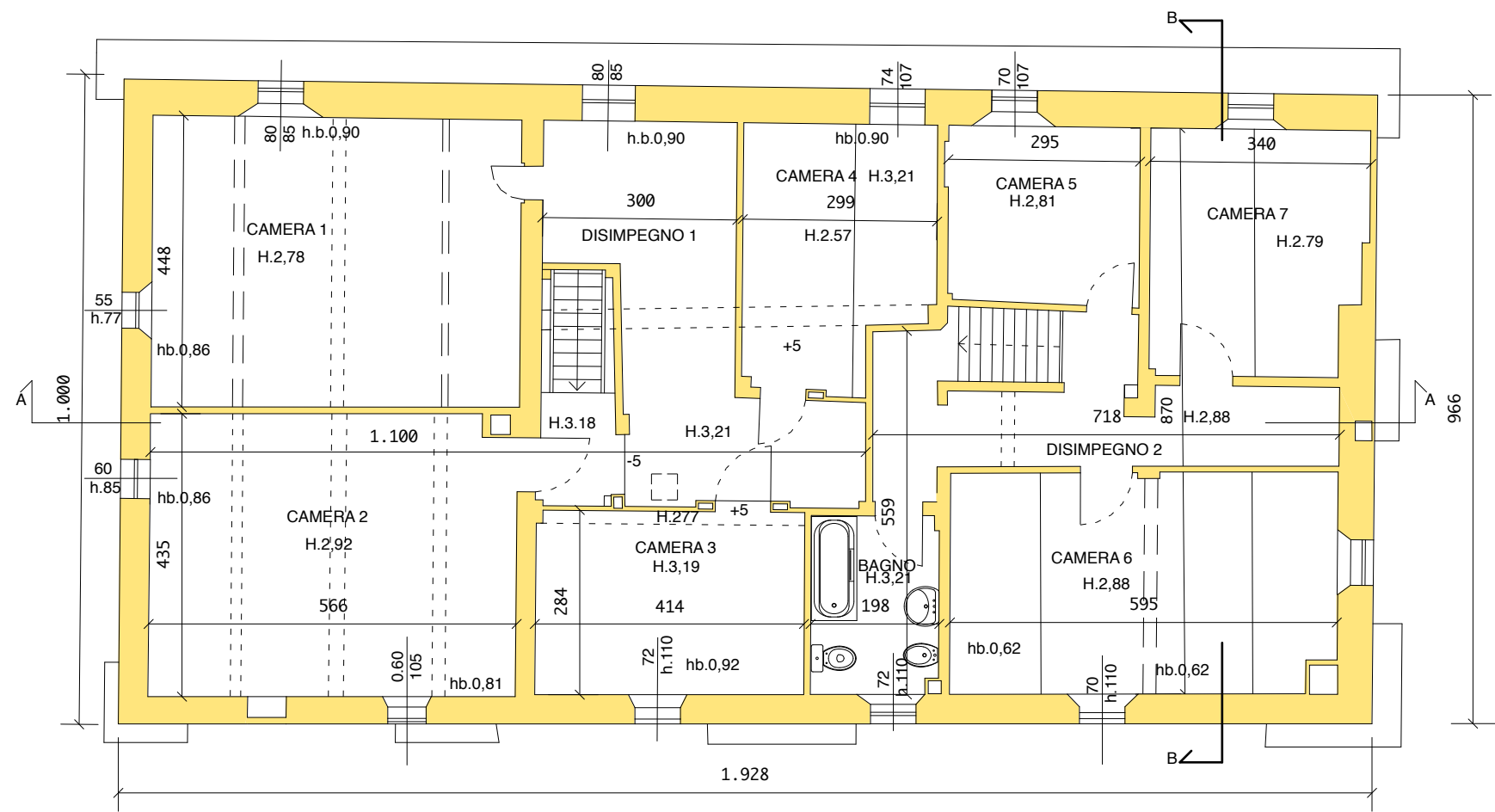
COMUNE DI BOLOGNA
 Dipartimento Lavori Pubblici,
 Mobilità e Patrimonio
 Settore Edilizia e Patrimonio
 U.I. Tecnica

Via Vizzano civ.10
 Località Prati di Mugnano
 COMUNE DI SASSO MARCONI

RILIEVO

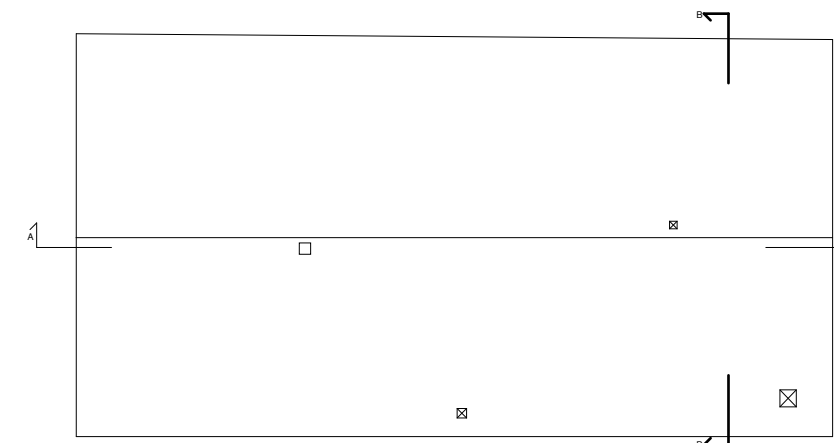
Giugno 2019 scala 1:100



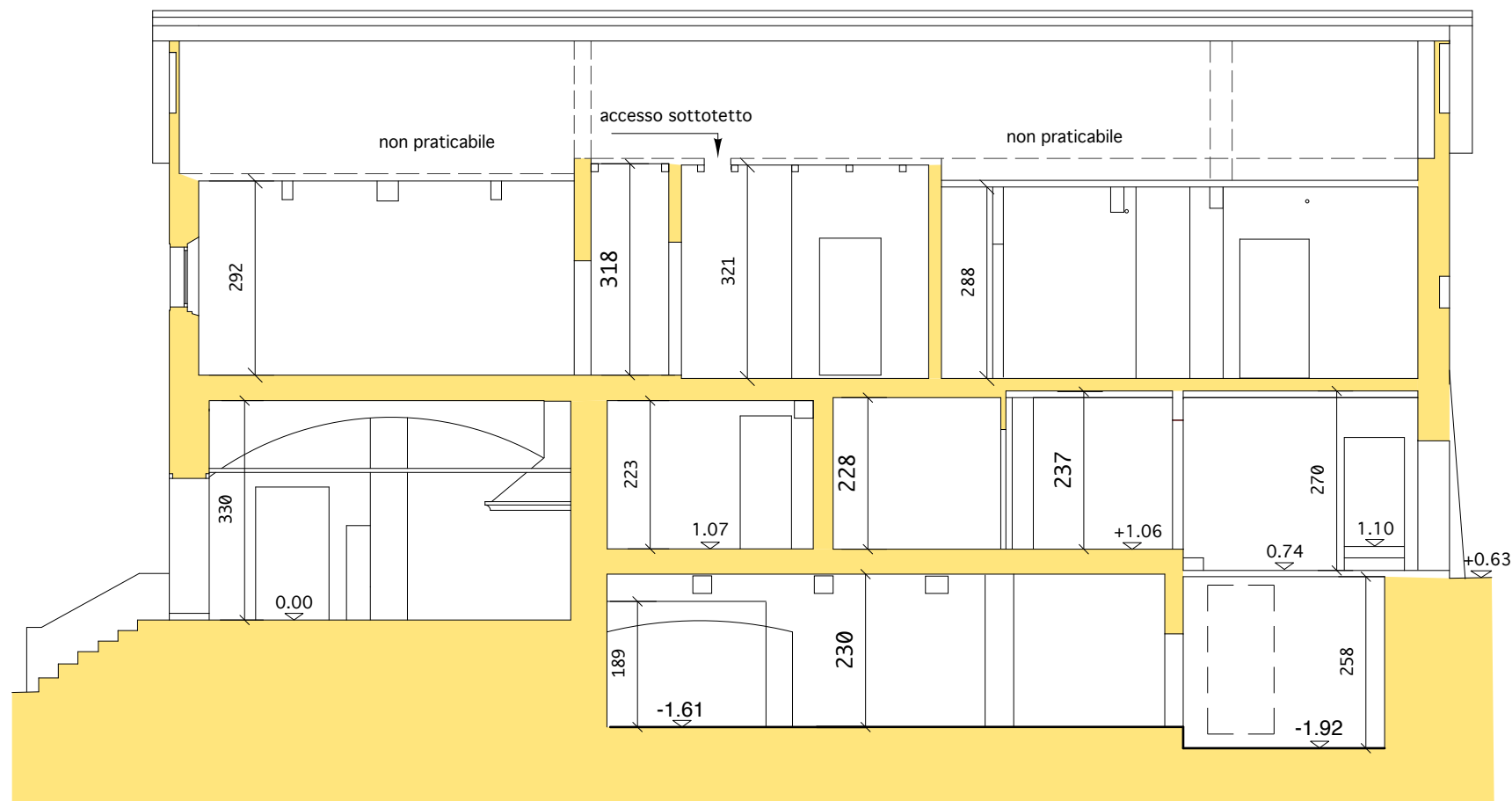


PIANO PRIMO

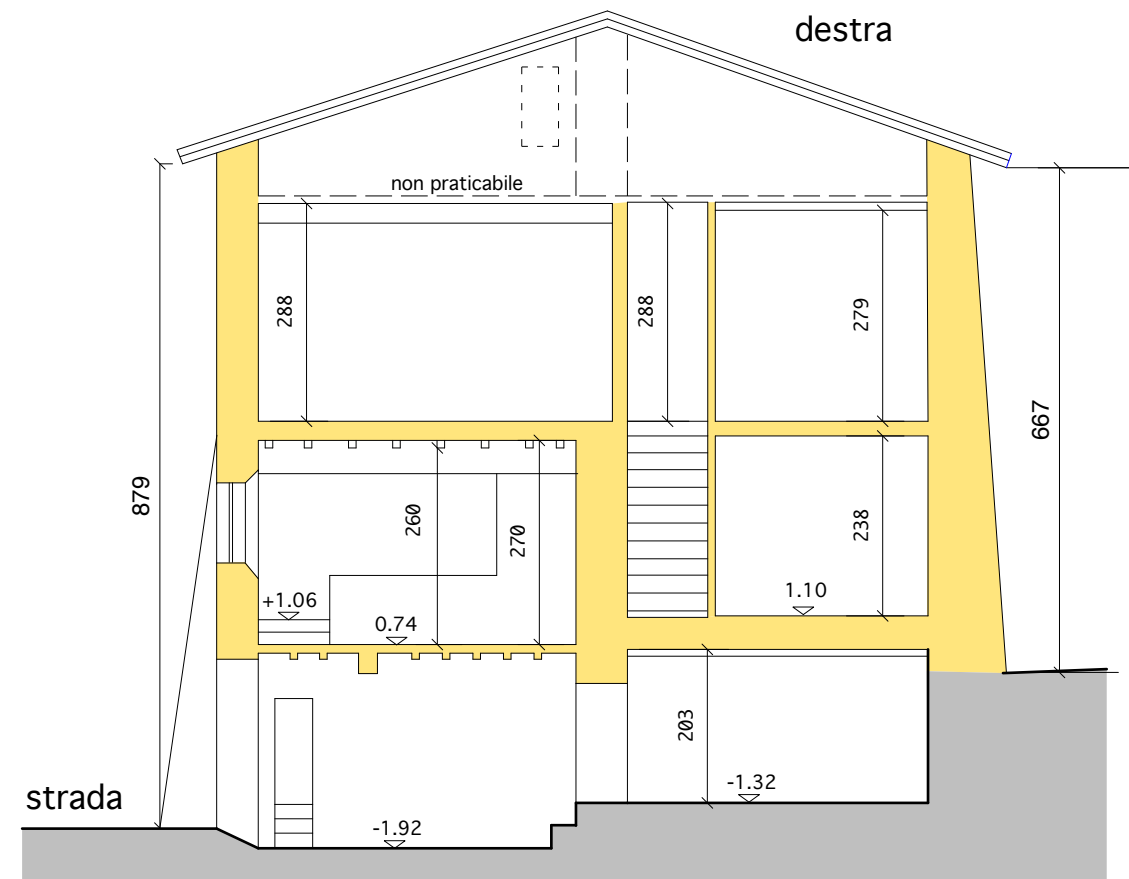
Via Vizzano civ.10
Localita' Prati di Mugnano
COMUNE DI SASSO MARCONI
RILIEVO
Giugno 2019 scala 1:100



PIANTA COPERTO scala 1:200



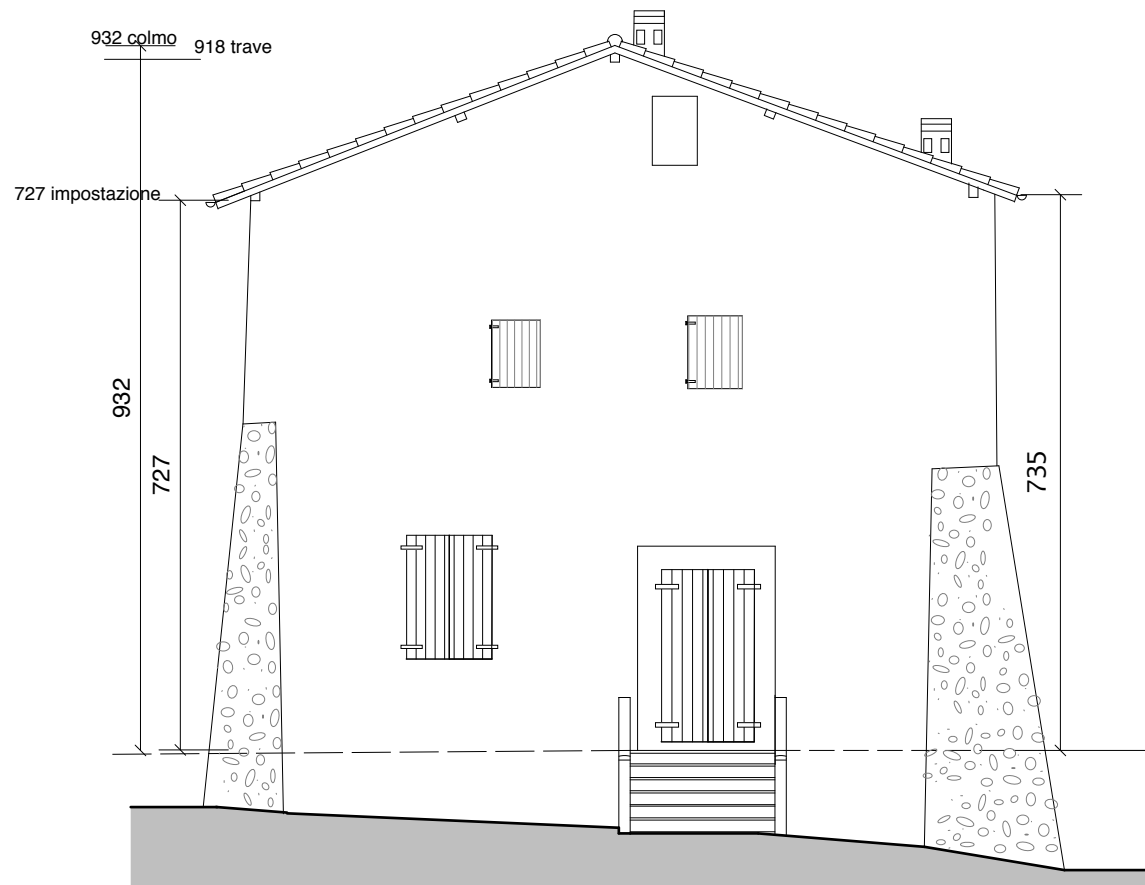
SEZIONE A-A



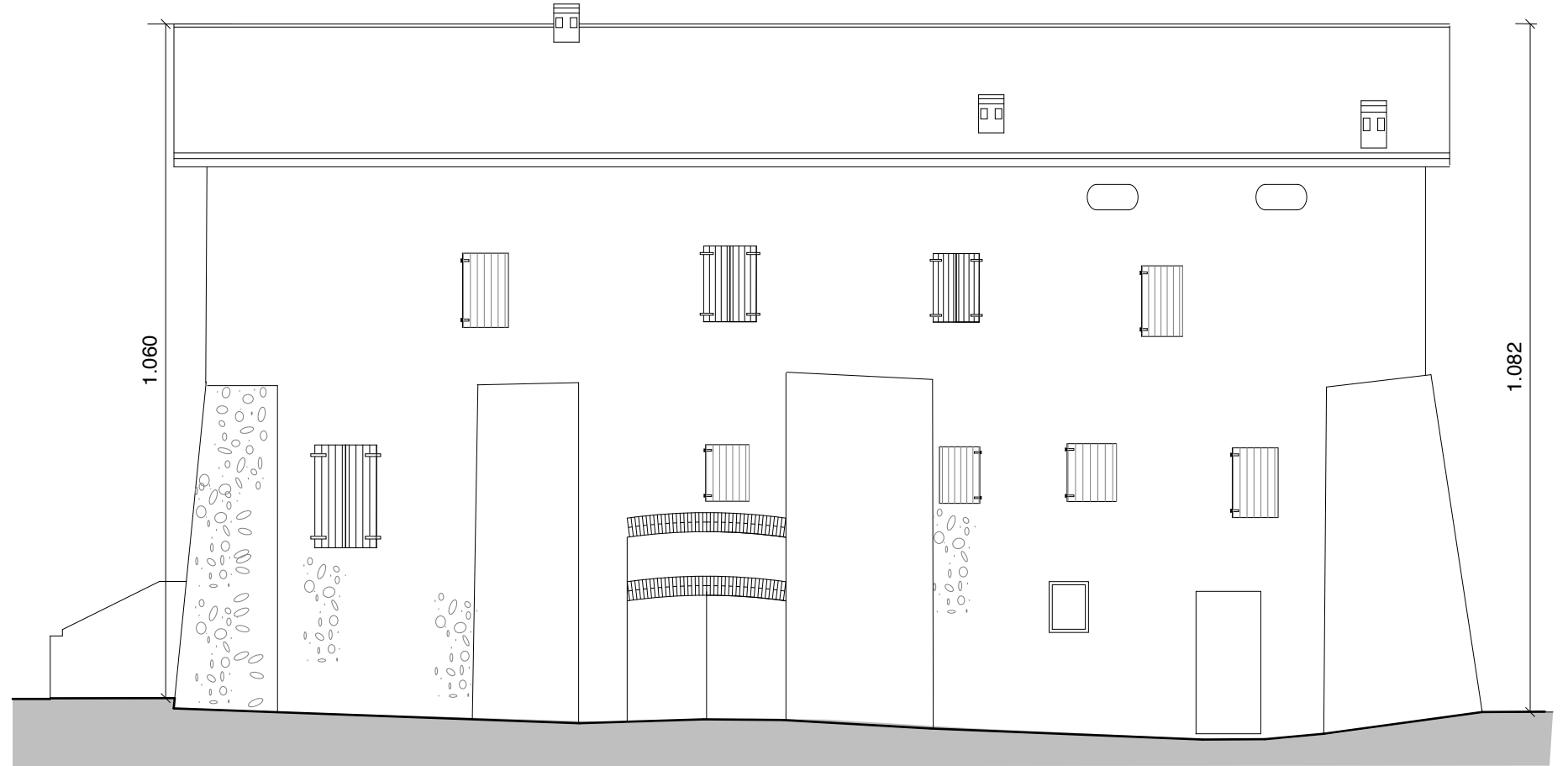
SEZIONE B-B

RILIEVO

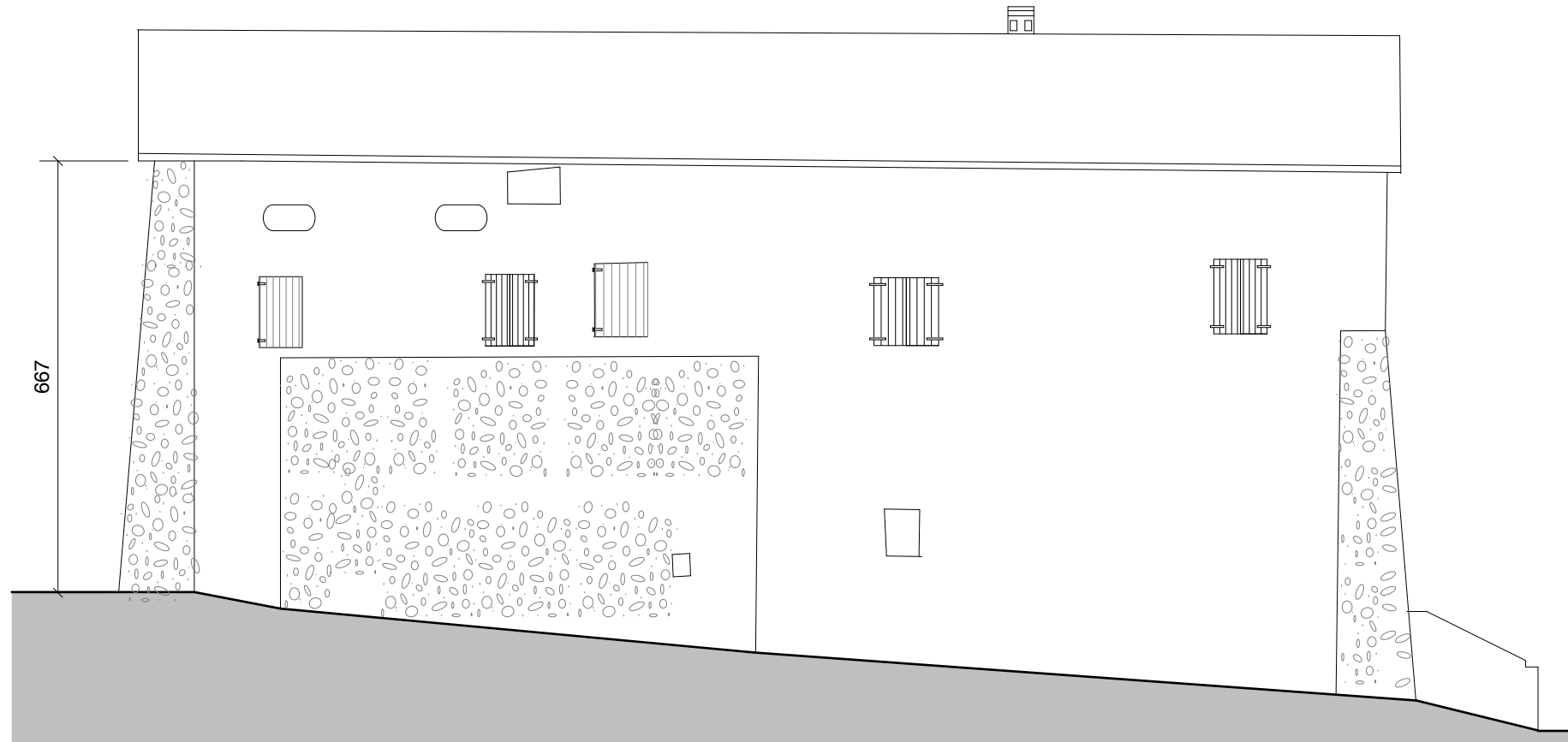
Rilievo eseguito con strumenti 2018



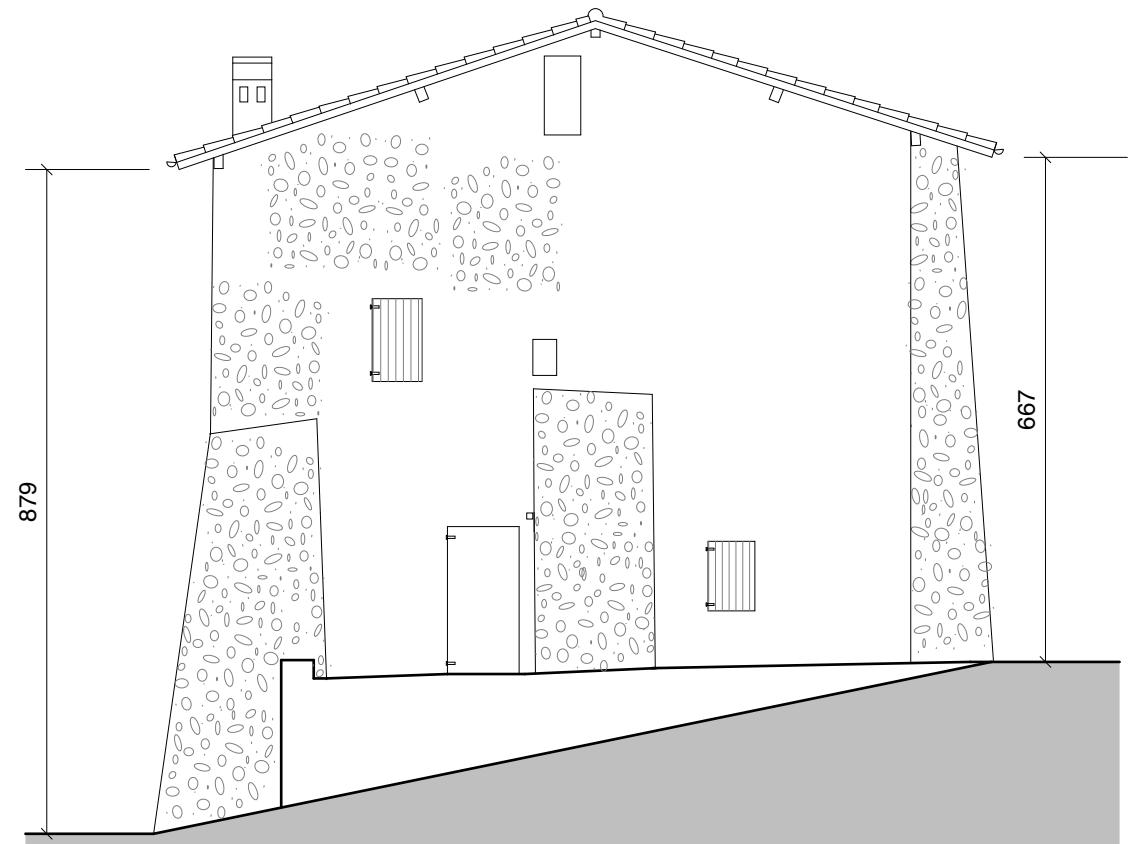
FRONTE SUD/OVEST



FRONTE SUD -EST



FRONTE NORD -OVEST



FRONTE NORD/EST