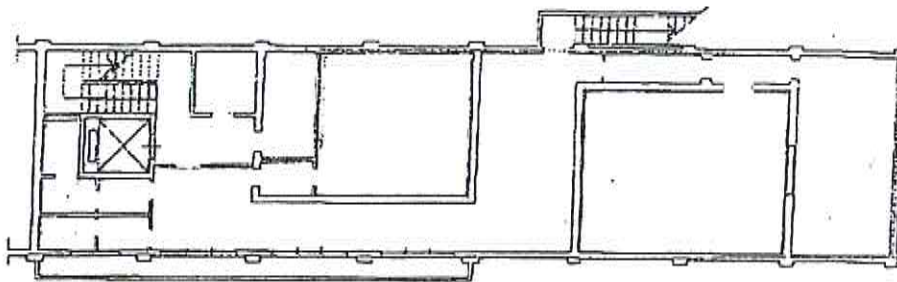
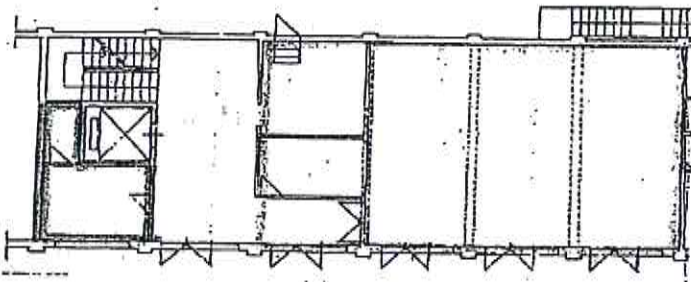


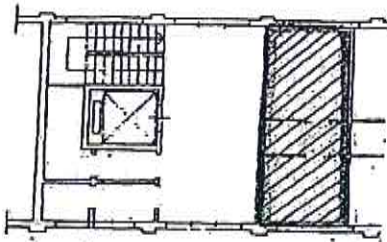
VIA LUDOVICO BERTI N. 2/9
EX VIA PIER DE' CRESCENZI N. 14




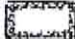


PIANO INTERRATO



PIANO TERRA



PIANO PRIMO

-  Spazi comuni
-  Spazi piano terra - Quartiere Porto
-  Spazi piano primo - Quartiere Porto, da assegnare
-  Spazi piano interrato - Attribuiti a Settore Sistema Culturale e Giovani - Atto di indirizzo P.G. n. 1318/2012