

Mese: Ottobre 2016

Data		MOVIMENTI		TOTALE MOV	RWY 12		TOTALE RWY12	RWY 30		TOTALE RWY30	% DEC RWY 12	% ARR RWY 30
		DEC	ARR		DEC	ARR		DEC	ARR			
01/10/16	sab	89	83	172	65	83	148	24	0	24	73%	0%
02/10/16	dom	93	99	192	53	81	134	40	18	58	57%	18%
03/10/16	lun	103	101	204	78	99	177	25	2	27	76%	2%
04/10/16	mar	94	99	193	60	97	157	34	2	36	64%	2%
05/10/16	mer	99	101	200	79	101	180	20	0	20	80%	0%
06/10/16	gio	106	111	217	90	110	200	16	1	17	85%	1%
07/10/16	ven	109	109	218	46	65	111	63	44	107	42%	40%
08/10/16	sab	87	79	166	59	76	135	28	3	31	68%	4%
09/10/16	dom	84	92	176	69	90	159	15	2	17	82%	2%
10/10/16	lun	103	99	202	46	69	115	57	30	87	45%	30%
11/10/16	mar	97	97	194	74	95	169	23	2	25	76%	2%
12/10/16	mer	97	103	200	57	79	136	40	24	64	59%	23%
13/10/16	gio	93	95	188	60	72	132	33	23	56	65%	24%
14/10/16	ven	106	108	214	84	89	173	22	19	41	79%	18%
15/10/16	sab	81	86	167	32	49	81	49	37	86	40%	43%
16/10/16	dom	90	89	179	34	48	82	56	41	97	38%	46%
17/10/16	lun	109	107	216	92	104	196	17	3	20	84%	3%
18/10/16	mar	86	97	183	62	96	158	24	1	25	72%	1%
19/10/16	mer	102	102	204	89	101	190	13	1	14	87%	1%
20/10/16	gio	96	109	205	76	109	185	20	0	20	79%	0%
21/10/16	ven	115	113	228	87	110	197	28	3	31	76%	3%
22/10/16	sab	78	119	197	47	71	118	32	48	80	60%	40%
23/10/16	dom	89	92	181	64	76	140	25	16	41	72%	17%
24/10/16	lun	100	98	198	63	86	149	37	12	49	63%	12%
25/10/16	mar	91	92	183	58	79	137	33	13	46	64%	14%
26/10/16	mer	96	100	196	59	80	139	37	20	57	61%	20%
27/10/16	gio	95	99	194	68	97	165	27	2	29	72%	2%
28/10/16	ven	103	101	204	69	99	168	34	2	36	67%	2%
29/10/16	sab	85	83	168	37	39	76	48	44	92	44%	53%
30/10/16	dom	78	81	159	53	77	130	25	4	29	68%	5%
31/10/16	lun	84	87	171	72	78	150	12	9	21	86%	10%
TOTALE		2.938	3.031	5.969	1.982	2.605	4.587	957	426	1.383	67%	14%

MONITORAGGIO MENSILE VOLI NOTTURNI
(fascia oraria 23:00 - 06:00)

Mese: Ottobre 2016

Data	MOVIMENTI		TOTALE MOV	RWY 12		TOTALE RWY12	RWY 30		TOTALE RWY30	% DEC RWY 12	% ARR RWY 30	
	DEC	ARR		DEC	ARR		DEC	ARR				
01/10/16	sab	5	7	12	0	7	7	5	0	5	0%	0%
02/10/16	dom	1	12	13	0	12	12	1	0	1	0%	0%
03/10/16	lun	4	11	15	0	11	11	4	0	4	0%	0%
04/10/16	mar	1	12	13	0	11	11	1	1	2	0%	8%
05/10/16	mer	4	13	17	1	13	14	3	0	3	25%	0%
06/10/16	gio	4	12	16	2	12	14	2	0	2	50%	0%
07/10/16	ven	3	12	15	0	12	12	3	0	3	0%	0%
08/10/16	sab	3	9	12	0	9	9	3	0	3	0%	0%
09/10/16	dom	1	9	10	0	8	8	1	1	2	0%	11%
10/10/16	lun	4	12	16	0	12	12	4	0	4	0%	0%
11/10/16	mar	4	12	16	0	10	10	4	2	6	0%	17%
12/10/16	mer	2	12	14	0	11	11	2	1	3	0%	8%
13/10/16	gio	5	13	18	0	4	4	5	9	14	0%	69%
14/10/16	ven	3	15	18	0	15	15	3	0	3	0%	0%
15/10/16	sab	3	11	14	2	6	8	1	5	6	67%	45%
16/10/16	dom	1	7	8	0	7	7	1	0	1	0%	0%
17/10/16	lun	3	12	15	0	12	12	3	0	3	0%	0%
18/10/16	mar	3	12	15	0	12	12	3	0	3	0%	0%
19/10/16	mer	2	13	15	0	13	13	2	0	2	0%	0%
20/10/16	gio	3	13	16	0	13	13	3	0	3	0%	0%
21/10/16	ven	5	15	20	0	15	15	5	0	5	0%	0%
22/10/16	sab	3	7	10	0	7	7	3	0	3	0%	0%
23/10/16	dom	1	12	13	0	3	3	1	9	10	0%	75%
24/10/16	lun	6	16	22	1	13	14	5	3	8	17%	19%
25/10/16	mar	3	13	16	1	4	5	2	9	11	33%	69%
26/10/16	mer	4	10	14	0	9	9	4	1	5	0%	10%
27/10/16	gio	1	12	13	0	12	12	1	0	1	0%	0%
28/10/16	ven	4	12	16	0	12	12	4	0	4	0%	0%
29/10/16	sab	3	7	10	0	7	7	3	0	3	0%	0%
30/10/16	dom	3	7	10	0	6	6	3	1	4	0%	14%
31/10/16	lun	4	10	14	1	10	11	3	0	3	25%	0%
TOTALE		96	350	446	8	308	316	88	42	130	8%	12%

% DEC rwy12/TOT	0-49%	50-69%	70-100%
-----------------	-------	---------------	----------------

Campi
tabella

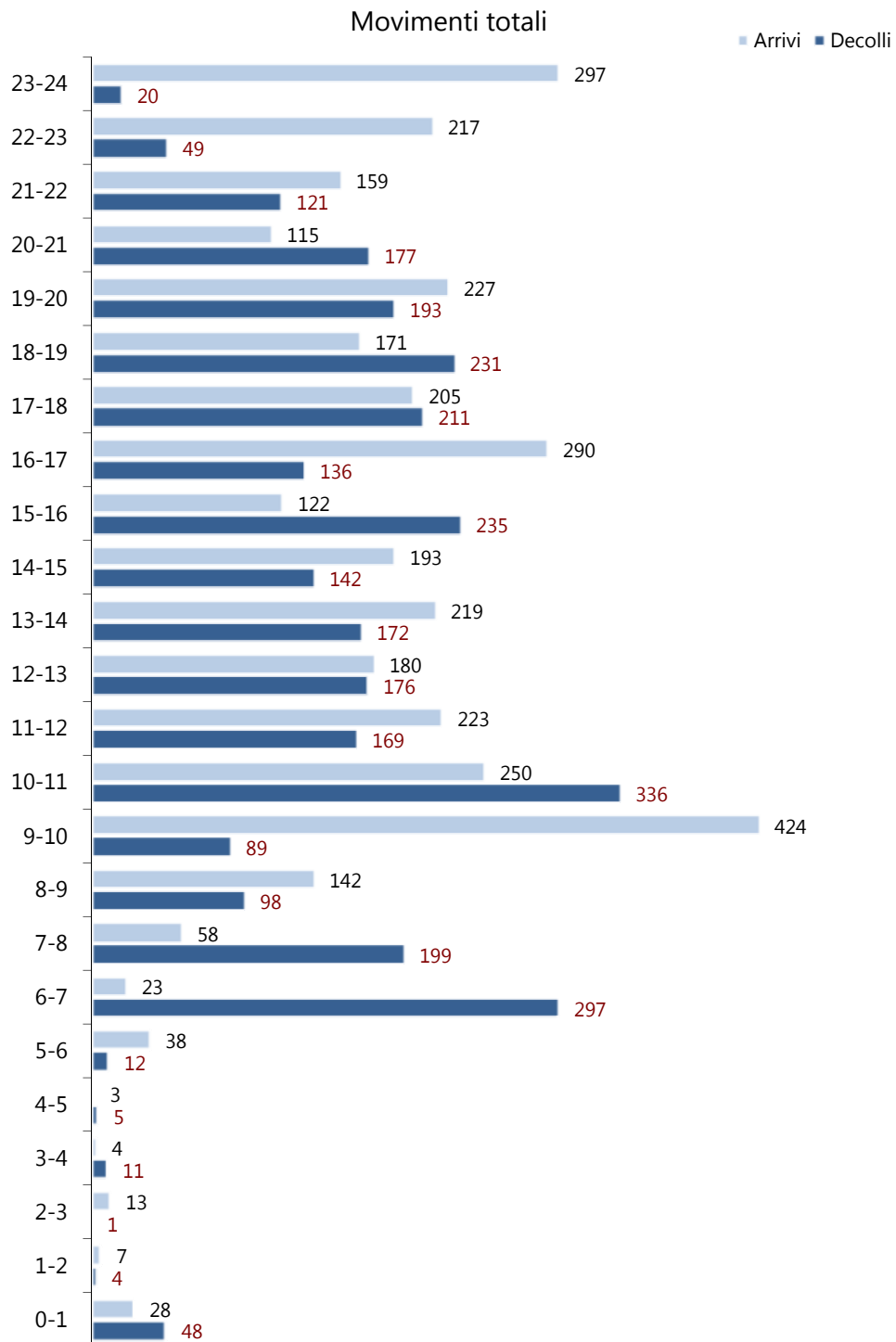
- DEC RWY12: decolli verso Bologna
- DEC RWY30: decolli verso Bargellino
- ARR RWY12: arrivi provenienti da Bargellino
- ARR RWY30: arrivi provenienti da Bologna

Tracce radar

- * = Tracce radar mancanti; dati di traffico da fonti commercial
- * = Tracce radar parziali (inferiori al 50%); completamento con dati commerciali

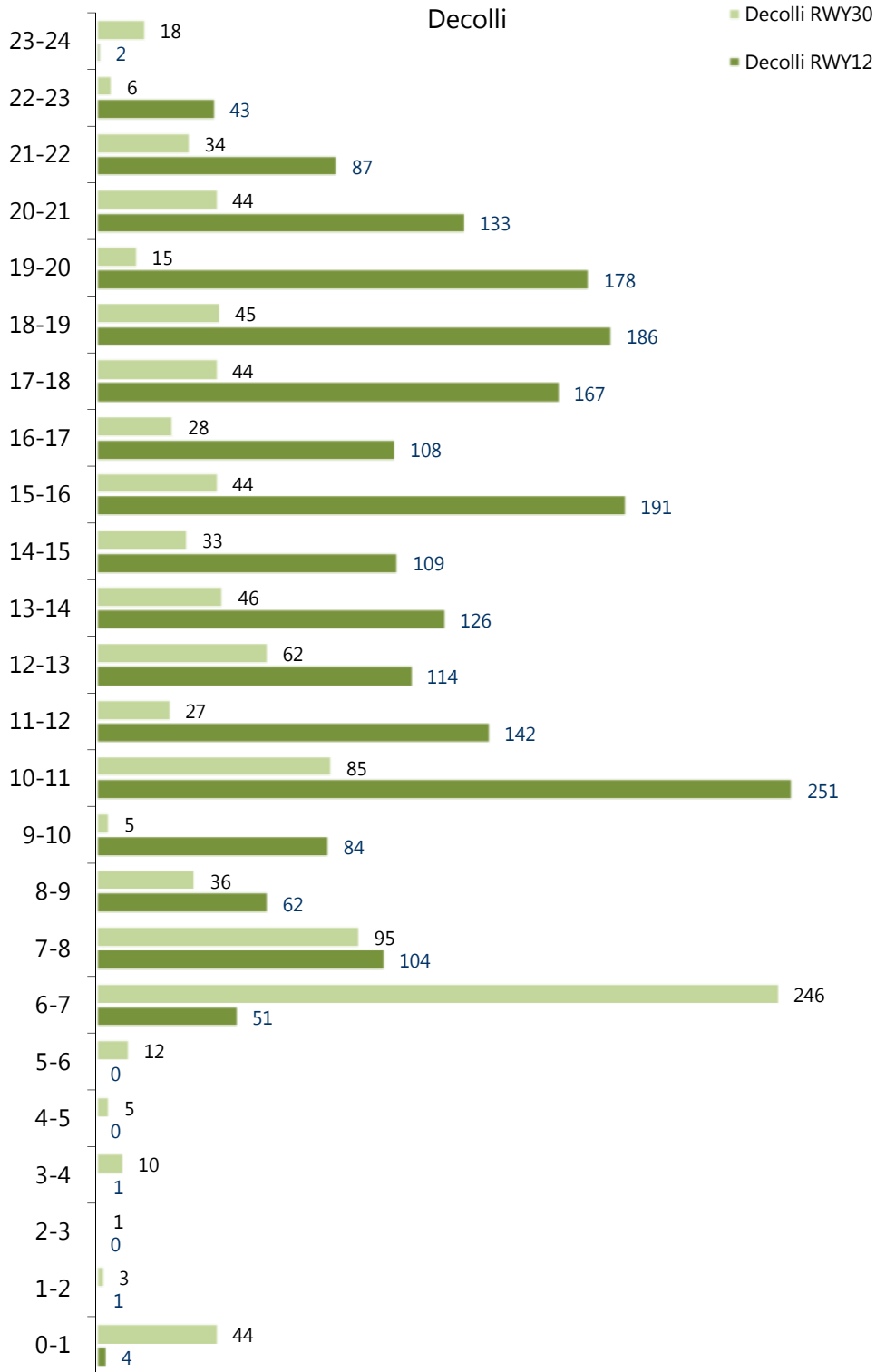
DISTRIBUZIONE MOVIMENTI PER FASCIA ORARIA

mese: Ottobre 2016

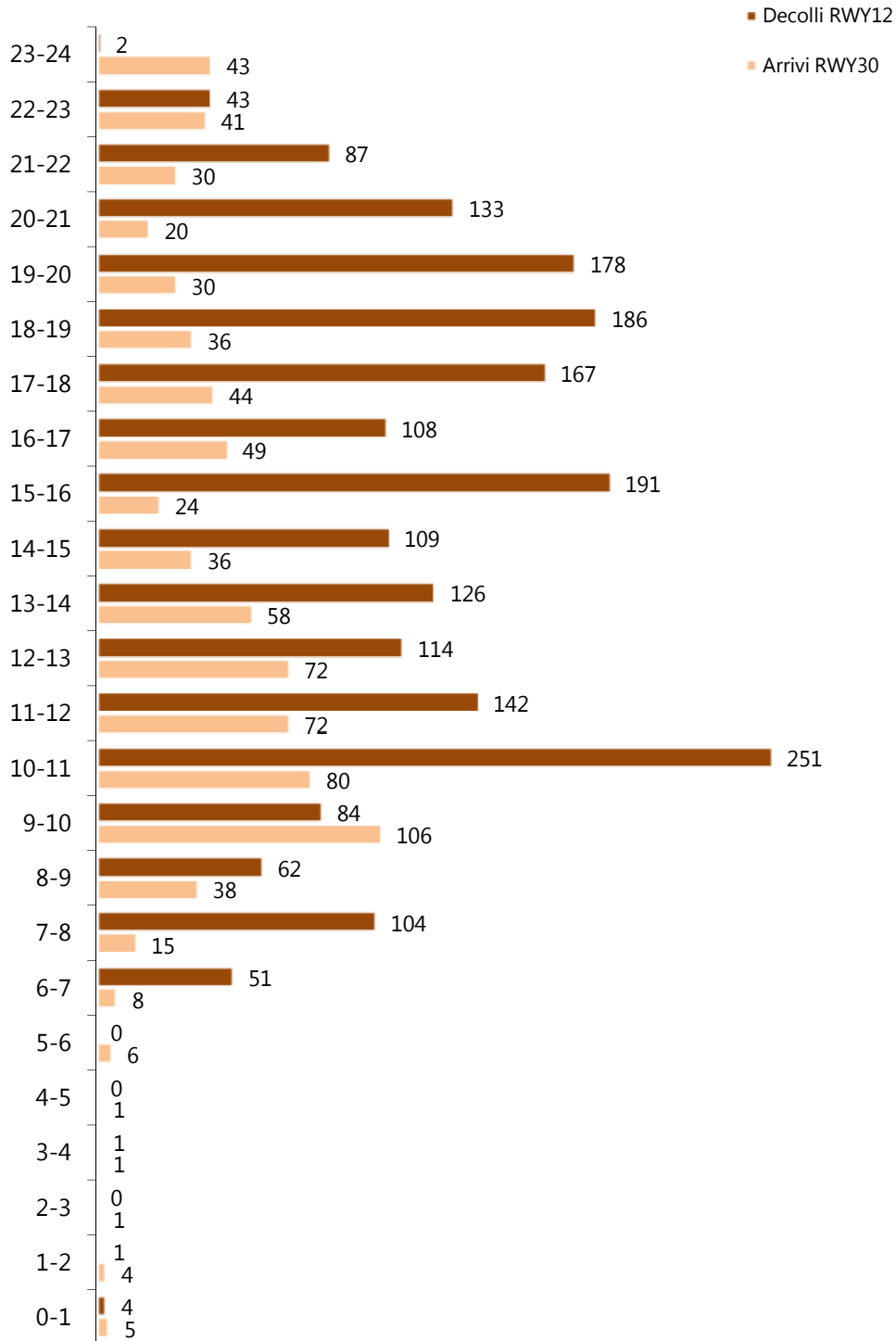


DISTRIBUZIONE MOVIMENTI PER FASCIA ORARIA

mese: Ottobre 2016

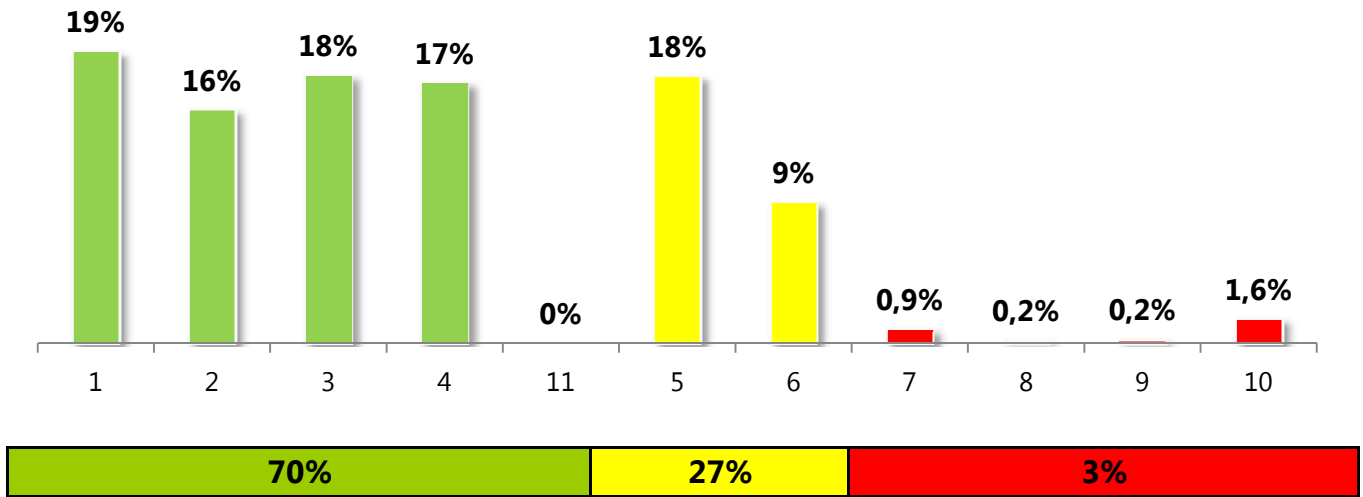





Decolli RWY12 - Arrivi RWY30




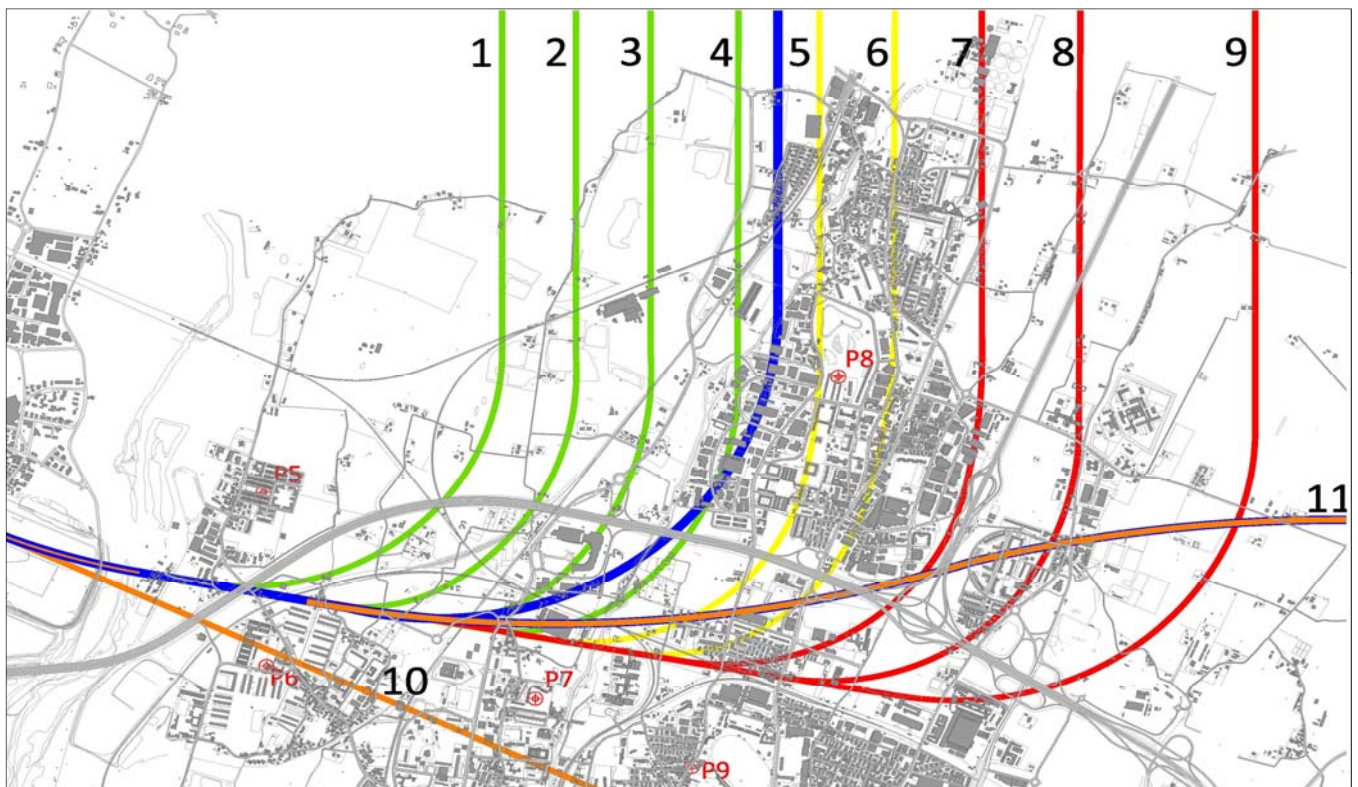
DISTRIBUZIONE STATISTICA DECOLLI RWY12

Mese: Ottobre 2016



 Rotte statistiche di distribuzione
 Rotte statistiche di distribuzione
 Rotte statistiche di distribuzione

 nominal ICP RWY12



in base a quanto stabilito dalla ICP RWY12, la procedura è considerata correttamente eseguita se la traccia radar è assimilabile alle rotte statistiche 1 ÷ 4 - 11.