

MONITORAGGIO MENSILE VOLI

Mese: Aprile 2017

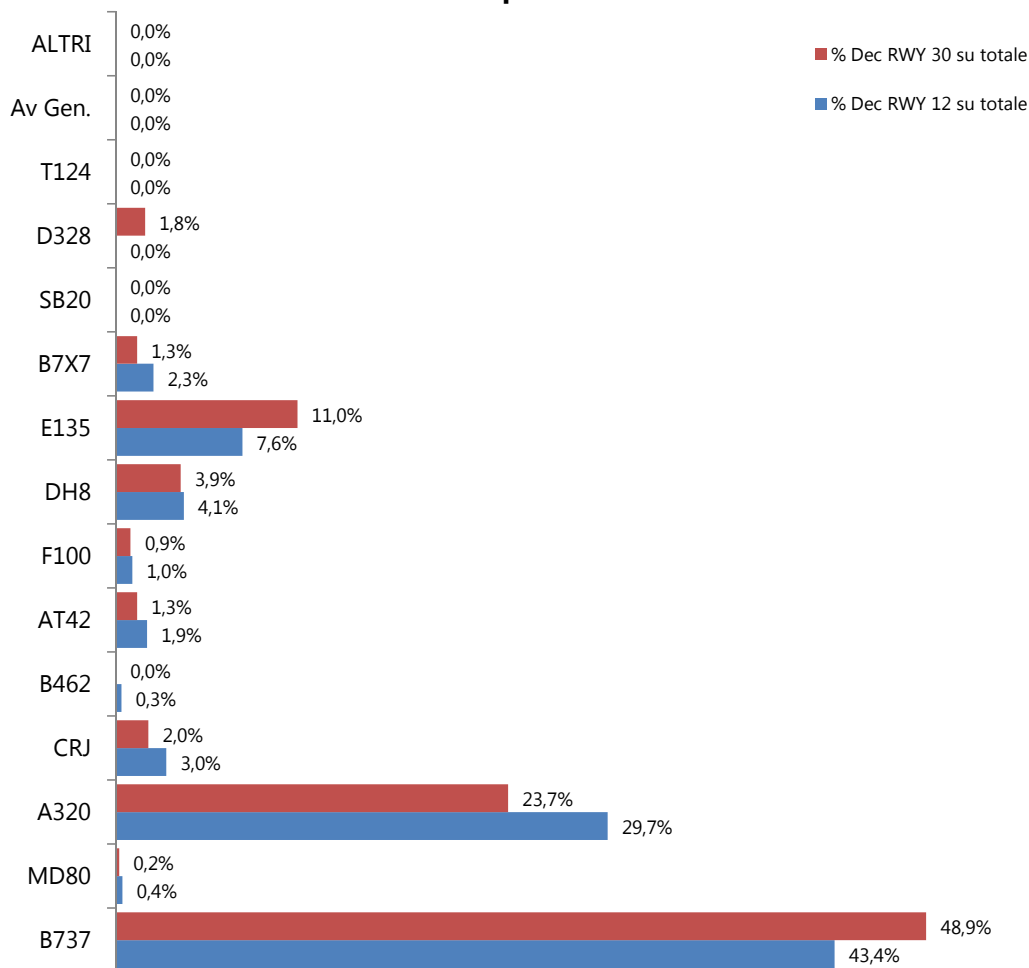
| Data | | MOVIMENTI | | RWY 12 | | TOTALE RWY12 | RWY 30 | | TOTALE RWY30 | TOTALE MOV | Sorvoli BO (D12+A30) | % DEC RWY 12 |
|---------------|-----|--------------|--------------|--------------|--------------|-----------------|--------------|------------|-----------------|---------------|-------------------------|-----------------|
| | | DEC | ARR | DEC | ARR | | DEC | ARR | | | | |
| 01/04/17 | sab | 84 | 85 | 62 | 85 | 147 | 22 | 0 | 22 | 169 | 62 | 74% |
| 02/04/17 | dom | 85 | 85 | 46 | 66 | 112 | 39 | 19 | 58 | 170 | 65 | 54% |
| 03/04/17 | lun | 95 | 98 | 6 | 25 | 31 | 89 | 73 | 162 | 193 | 79 | 6% |
| 04/04/17 | mar | 97 | 97 | 76 | 96 | 172 | 21 | 1 | 22 | 194 | 77 | 78% |
| 05/04/17 | mer | 94 | 91 | 72 | 91 | 163 | 22 | 0 | 22 | 185 | 72 | 77% |
| 06/04/17 | gio | 93 | 95 | 64 | 94 | 158 | 29 | 1 | 30 | 188 | 65 | 69% |
| 07/04/17 | ven | 102 | 102 | 85 | 102 | 187 | 17 | 0 | 17 | 204 | 85 | 83% |
| 08/04/17 | sab | 86 | 82 | 63 | 82 | 145 | 23 | 0 | 23 | 168 | 63 | 73% |
| 09/04/17 | dom | 88 | 92 | 64 | 92 | 156 | 24 | 0 | 24 | 180 | 64 | 73% |
| 10/04/17 | lun | 97 | 100 | 57 | 85 | 142 | 40 | 15 | 55 | 197 | 72 | 59% |
| 11/04/17 | mar | 95 | 89 | 63 | 89 | 152 | 32 | 0 | 32 | 184 | 63 | 66% |
| 12/04/17 | mer | 96 | 99 | 91 | 99 | 190 | 5 | 0 | 5 | 195 | 91 | 95% |
| 13/04/17 | gio | 100 | 104 | 64 | 89 | 153 | 36 | 15 | 51 | 204 | 79 | 64% |
| 14/04/17 | ven | 102 | 101 | 78 | 101 | 179 | 24 | 0 | 24 | 203 | 78 | 76% |
| 15/04/17 | sab | 87 | 81 | 44 | 50 | 94 | 43 | 31 | 74 | 168 | 75 | 51% |
| 16/04/17 | dom | 87 | 88 | 65 | 88 | 153 | 22 | 0 | 22 | 175 | 65 | 75% |
| 17/04/17 | lun | 93 | 94 | 82 | 93 | 175 | 11 | 1 | 12 | 187 | 83 | 88% |
| 18/04/17 | mar | 98 | 99 | 81 | 99 | 180 | 17 | 0 | 17 | 197 | 81 | 83% |
| 19/04/17 | mer | 100 | 99 | 15 | 33 | 48 | 85 | 66 | 151 | 199 | 81 | 15% |
| 20/04/17 | gio | 97 | 98 | 54 | 70 | 124 | 43 | 28 | 71 | 195 | 82 | 56% |
| 21/04/17 | ven | 98 | 99 | 74 | 99 | 173 | 24 | 0 | 24 | 197 | 74 | 76% |
| 22/04/17 | sab | 94 | 93 | 44 | 61 | 105 | 50 | 32 | 82 | 187 | 76 | 47% |
| 23/04/17 | dom | 88 | 87 | 60 | 83 | 143 | 28 | 4 | 32 | 175 | 64 | 68% |
| 24/04/17 | lun | 94 | 98 | 53 | 87 | 140 | 41 | 11 | 52 | 192 | 64 | 56% |
| 25/04/17 | mar | 96 | 95 | 67 | 94 | 161 | 29 | 1 | 30 | 191 | 68 | 70% |
| 26/04/17 | mer | 104 | 102 | 73 | 99 | 172 | 31 | 3 | 34 | 206 | 76 | 70% |
| 27/04/17 | gio | 96 | 98 | 72 | 89 | 161 | 24 | 9 | 33 | 194 | 81 | 75% |
| 28/04/17 | ven | 113 | 110 | 16 | 35 | 51 | 97 | 75 | 172 | 223 | 91 | 14% |
| 29/04/17 | sab | 87 | 86 | 60 | 83 | 143 | 27 | 3 | 30 | 173 | 63 | 69% |
| 30/04/17 | dom | 85 | 83 | 58 | 83 | 141 | 27 | 0 | 27 | 168 | 58 | 68% |
| 01/05/17 | lun | - | - | - | - | - | - | - | - | - | - | - |
| TOTALE | | 2.831 | 2.830 | 1.809 | 2.442 | 4.251 | 1.022 | 388 | 1.410 | 5.661 | 2.197 | 64% |

ANALISI FLEET-MIX MENSILE

mese: Aprile 2017

| GRUPPO | Descrizione | DEC RWY12 | DEC RWY30 | ARR RWY30 | ARR RWY12 | TOT | % / Tot |
|----------------|----------------------------------------|--------------|--------------|------------|--------------|--------------|---------|
| B737 | <i>Boeing 737</i> | 785 | 500 | 177 | 1109 | 2.577 | 45,5% |
| MD80 | <i>McDonnell Douglas MD-80</i> | 7 | 2 | 2 | 7 | 18 | 0,3% |
| A320 | <i>Airbus A318-A319-A320-A321</i> | 537 | 242 | 107 | 671 | 1.557 | 27,5% |
| CRJ | <i>Canadair Regional Jet</i> | 55 | 20 | 12 | 63 | 150 | 2,6% |
| B462 | <i>British Aerospace 146 Freighter</i> | 6 | 0 | 0 | 6 | 12 | 0,2% |
| AT42 | <i>ATR 42-45-72</i> | 34 | 13 | 4 | 43 | 94 | 1,7% |
| F100 | <i>Fokker</i> | 18 | 9 | 3 | 23 | 53 | 0,9% |
| DH8 | <i>Dash</i> | 74 | 40 | 14 | 100 | 228 | 4,0% |
| E135 | <i>Embraer</i> | 138 | 112 | 40 | 210 | 500 | 8,8% |
| B7X7 | <i>B767 - B757 - A300 - A330</i> | 41 | 13 | 3 | 51 | 108 | 1,9% |
| SB20 | <i>SAAB 2000</i> | 0 | 0 | 0 | 0 | 0 | 0,0% |
| D328 | <i>Dornier 228-328</i> | 0 | 18 | 0 | 17 | 35 | 0,6% |
| T124 | <i>Antonov 26 - Tupolev</i> | 0 | 0 | 0 | 0 | 0 | 0,0% |
| Av Gen. | <i>Aviazione Generale</i> | 0 | 0 | 0 | 0 | 0 | 0,0% |
| ALTRI | - | 114 | 53 | 26 | 142 | 329 | 5,8% |
| TOTALE | | 1.809 | 1.022 | 388 | 2.442 | 5.661 | |

% Movimento per direttrice di decollo



Il grafico mostra il contributo dei gruppi di a/m al totale dei decolli per le direttrici RWY12 e RWY30

MONITORAGGIO MENSILE VOLI
Periodo notturno (23:00 - 06:00)

Mese: Aprile 2017

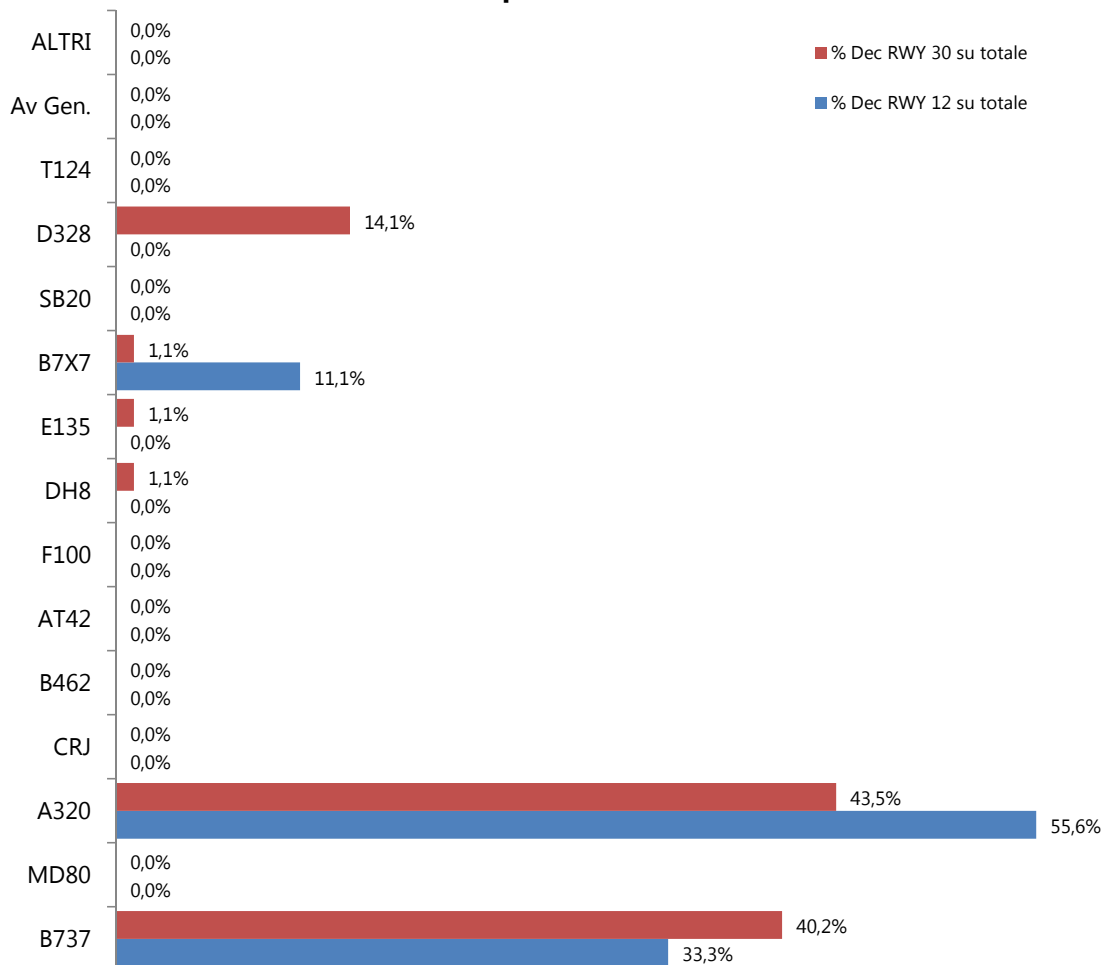
| Data | MOVIMENTI | | RWY 12 | | TOTALE RWY12 | RWY 30 | | TOTALE RWY30 | TOTALE MOV | Sorvoli BO (D12+A30) | |
|---------------|-----------|------------|------------|----------|-----------------|------------|-----------|-----------------|---------------|-------------------------|-----------|
| | DEC | ARR | DEC | ARR | | DEC | ARR | | | | |
| 01/04/17 | sab | 3 | 10 | 0 | 10 | 10 | 3 | 0 | 3 | 13 | 0 |
| 02/04/17 | dom | 1 | 8 | 0 | 8 | 8 | 1 | 0 | 1 | 9 | 0 |
| 03/04/17 | lun | 4 | 15 | 0 | 15 | 15 | 4 | 0 | 4 | 19 | 0 |
| 04/04/17 | mar | 4 | 11 | 1 | 11 | 12 | 3 | 0 | 3 | 15 | 1 |
| 05/04/17 | mer | 3 | 8 | 0 | 8 | 8 | 3 | 0 | 3 | 11 | 0 |
| 06/04/17 | gio | 3 | 13 | 0 | 13 | 13 | 3 | 0 | 3 | 16 | 0 |
| 07/04/17 | ven | 4 | 13 | 0 | 13 | 13 | 4 | 0 | 4 | 17 | 0 |
| 08/04/17 | sab | 3 | 7 | 0 | 7 | 7 | 3 | 0 | 3 | 10 | 0 |
| 09/04/17 | dom | 1 | 10 | 0 | 10 | 10 | 1 | 0 | 1 | 11 | 0 |
| 10/04/17 | lun | 3 | 14 | 0 | 14 | 14 | 3 | 0 | 3 | 17 | 0 |
| 11/04/17 | mar | 6 | 9 | 0 | 9 | 9 | 6 | 0 | 6 | 15 | 0 |
| 12/04/17 | mer | 2 | 9 | 0 | 9 | 9 | 2 | 0 | 2 | 11 | 0 |
| 13/04/17 | gio | 3 | 13 | 0 | 13 | 13 | 3 | 0 | 3 | 16 | 0 |
| 14/04/17 | ven | 3 | 13 | 0 | 13 | 13 | 3 | 0 | 3 | 16 | 0 |
| 15/04/17 | sab | 5 | 7 | 0 | 4 | 4 | 5 | 3 | 8 | 12 | 3 |
| 16/04/17 | dom | 2 | 7 | 1 | 7 | 8 | 1 | 0 | 1 | 9 | 1 |
| 17/04/17 | lun | 3 | 11 | 2 | 11 | 13 | 1 | 0 | 1 | 14 | 2 |
| 18/04/17 | mar | 3 | 14 | 0 | 14 | 14 | 3 | 0 | 3 | 17 | 0 |
| 19/04/17 | mer | 5 | 13 | 0 | 13 | 13 | 5 | 0 | 5 | 18 | 0 |
| 20/04/17 | gio | 4 | 12 | 1 | 12 | 13 | 3 | 0 | 3 | 16 | 1 |
| 21/04/17 | ven | 4 | 12 | 0 | 12 | 12 | 4 | 0 | 4 | 16 | 0 |
| 22/04/17 | sab | 5 | 8 | 0 | 8 | 8 | 5 | 0 | 5 | 13 | 0 |
| 23/04/17 | dom | 1 | 10 | 0 | 10 | 10 | 1 | 0 | 1 | 11 | 0 |
| 24/04/17 | lun | 4 | 14 | 0 | 14 | 14 | 4 | 0 | 4 | 18 | 0 |
| 25/04/17 | mar | 4 | 11 | 1 | 11 | 12 | 3 | 0 | 3 | 15 | 1 |
| 26/04/17 | mer | 4 | 13 | 1 | 13 | 14 | 3 | 0 | 3 | 17 | 1 |
| 27/04/17 | gio | 4 | 16 | 0 | 16 | 16 | 4 | 0 | 4 | 20 | 0 |
| 28/04/17 | ven | 4 | 13 | 2 | 13 | 15 | 2 | 0 | 2 | 17 | 2 |
| 29/04/17 | sab | 3 | 9 | 0 | 9 | 9 | 3 | 0 | 3 | 12 | 0 |
| 30/04/17 | dom | 3 | 8 | 0 | 8 | 8 | 3 | 0 | 3 | 11 | 0 |
| 01/05/17 | lun | - | - | - | - | - | - | - | - | - | - |
| TOTALE | | 101 | 331 | 9 | 328 | 337 | 92 | 3 | 95 | 432 | 12 |

ANALISI FLEET-MIX MENSILE
 Periodo notturno (23:00 - 06:00)

mese: Aprile 2017

| GRUPPO | Descrizione | DEC RWY12 | DEC RWY30 | ARR RWY30 | ARR RWY12 | TOT | % / Tot |
|----------------|----------------------------------------|-----------|-----------|-----------|------------|------------|---------|
| B737 | <i>Boeing 737</i> | 3 | 37 | 3 | 194 | 237 | 54,9% |
| MD80 | <i>McDonnell Douglas MD-80</i> | 0 | 0 | 0 | 0 | 0 | 0,0% |
| A320 | <i>Airbus A318-A319-A320-A321</i> | 5 | 40 | 0 | 75 | 120 | 27,8% |
| CRJ | <i>Canadair Regional Jet</i> | 0 | 0 | 0 | 1 | 1 | 0,2% |
| B462 | <i>British Aerospace 146 Freighter</i> | 0 | 0 | 0 | 1 | 1 | 0,2% |
| AT42 | <i>ATR 42-45-72</i> | 0 | 0 | 0 | 1 | 1 | 0,2% |
| F100 | <i>Fokker</i> | 0 | 0 | 0 | 0 | 0 | 0,0% |
| DH8 | <i>Dash</i> | 0 | 1 | 0 | 13 | 14 | 3,2% |
| E135 | <i>Embraer</i> | 0 | 1 | 0 | 13 | 14 | 3,2% |
| B7X7 | <i>B767 - B757 - A300 - A330</i> | 1 | 1 | 0 | 21 | 23 | 5,3% |
| SB20 | <i>SAAB 2000</i> | 0 | 0 | 0 | 0 | 0 | 0,0% |
| D328 | <i>Dornier 228-328</i> | 0 | 13 | 0 | 3 | 16 | 3,7% |
| T124 | <i>Antonov 26 - Tupolev</i> | 0 | 0 | 0 | 0 | 0 | 0,0% |
| Av Gen. | <i>Aviazione Generale</i> | 0 | 0 | 0 | 0 | 0 | 0,0% |
| ALTRI | - | 0 | -1 | 0 | 6 | 5 | 1,2% |
| TOTALE | | 9 | 92 | 3 | 328 | 432 | |

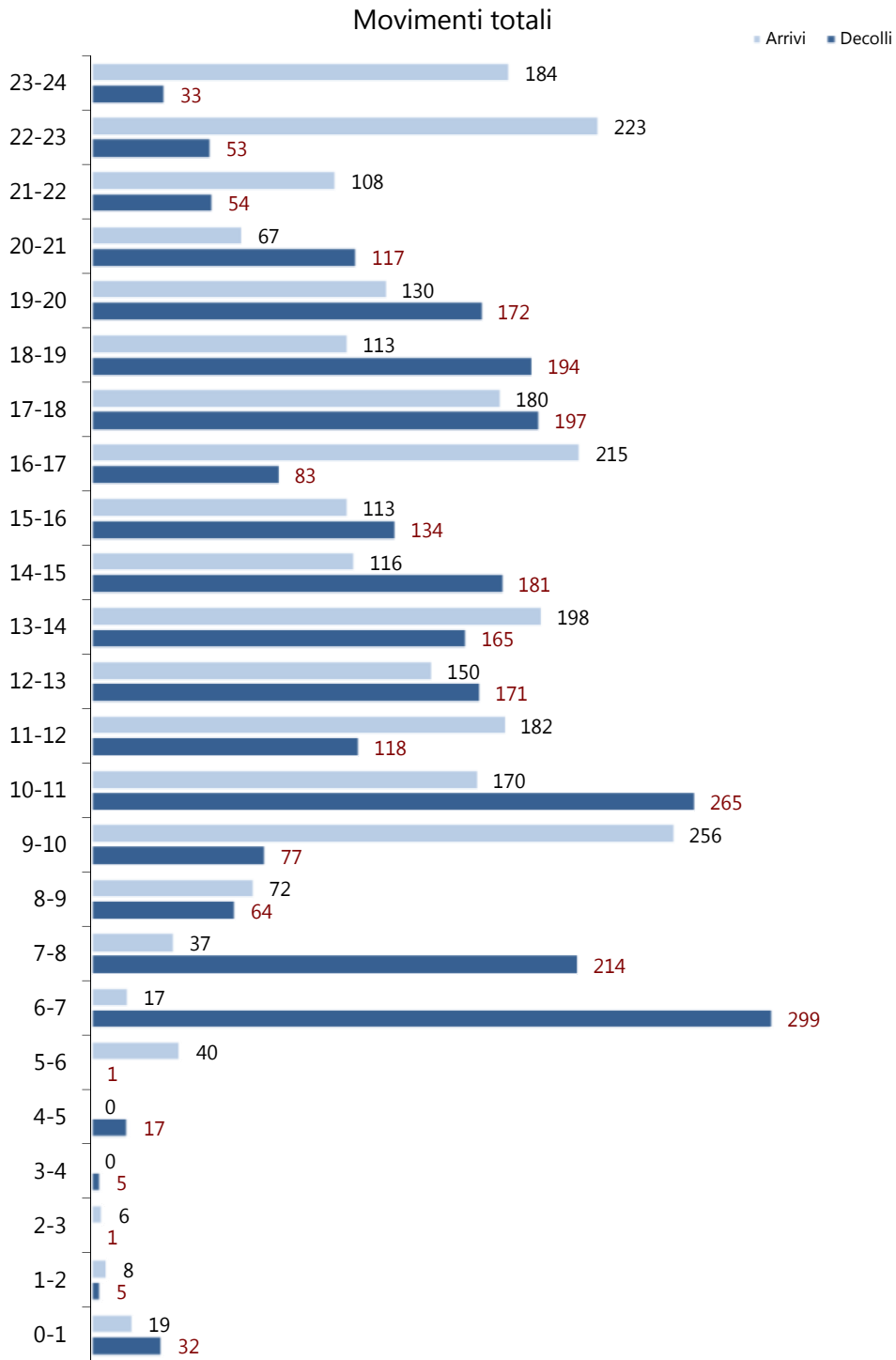
% Movimento per direttrice di decollo



Il grafico mostra il contributo dei gruppi di a/m al totale dei decolli per le direttrici RWY12 e RWY30

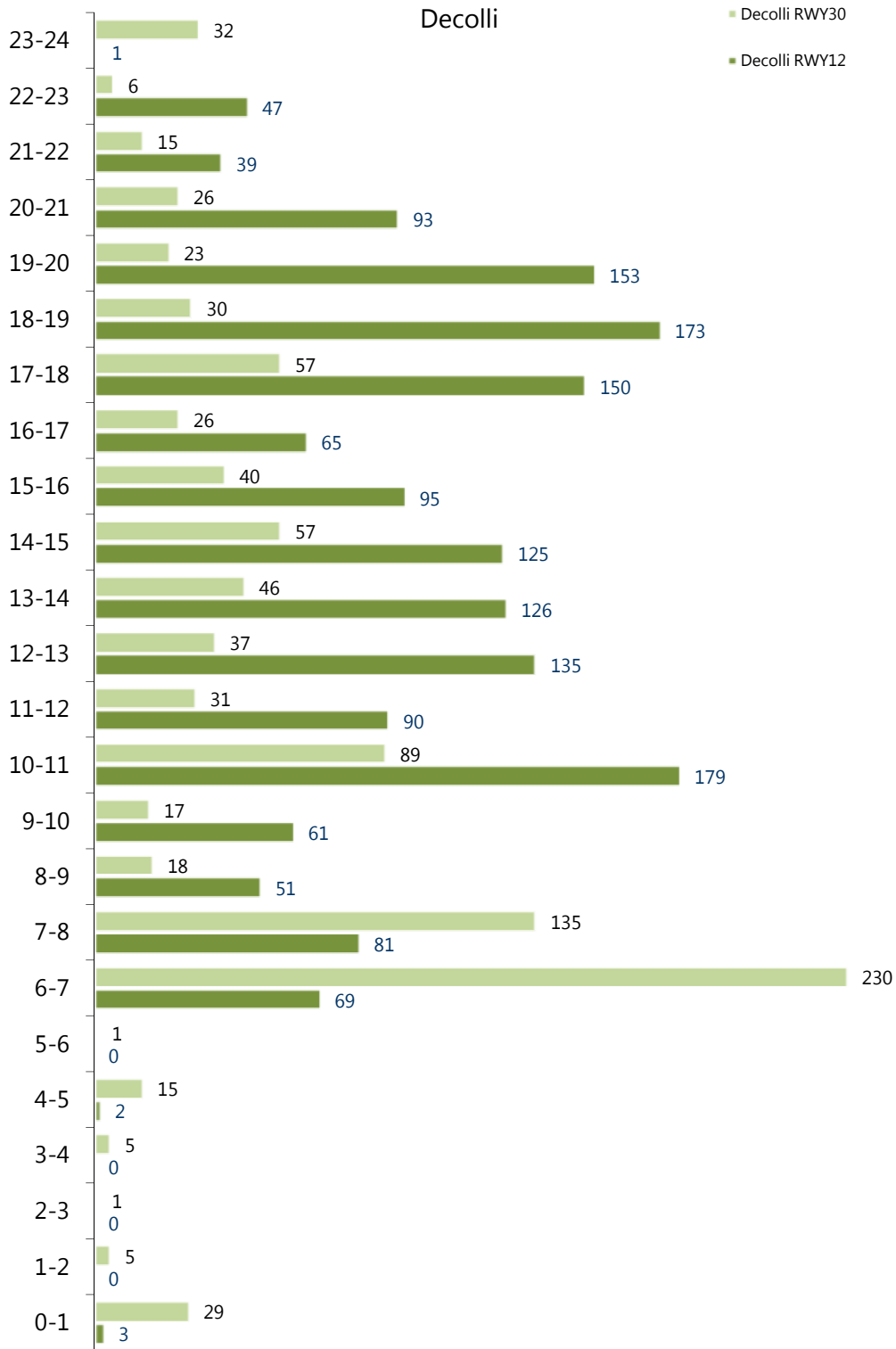
DISTRIBUZIONE MOVIMENTI PER FASCIA ORARIA

mese: Aprile 2017



DISTRIBUZIONE MOVIMENTI PER FASCIA ORARIA

mese: Aprile 2017



Decolli RWY12 - Arrivi RWY30

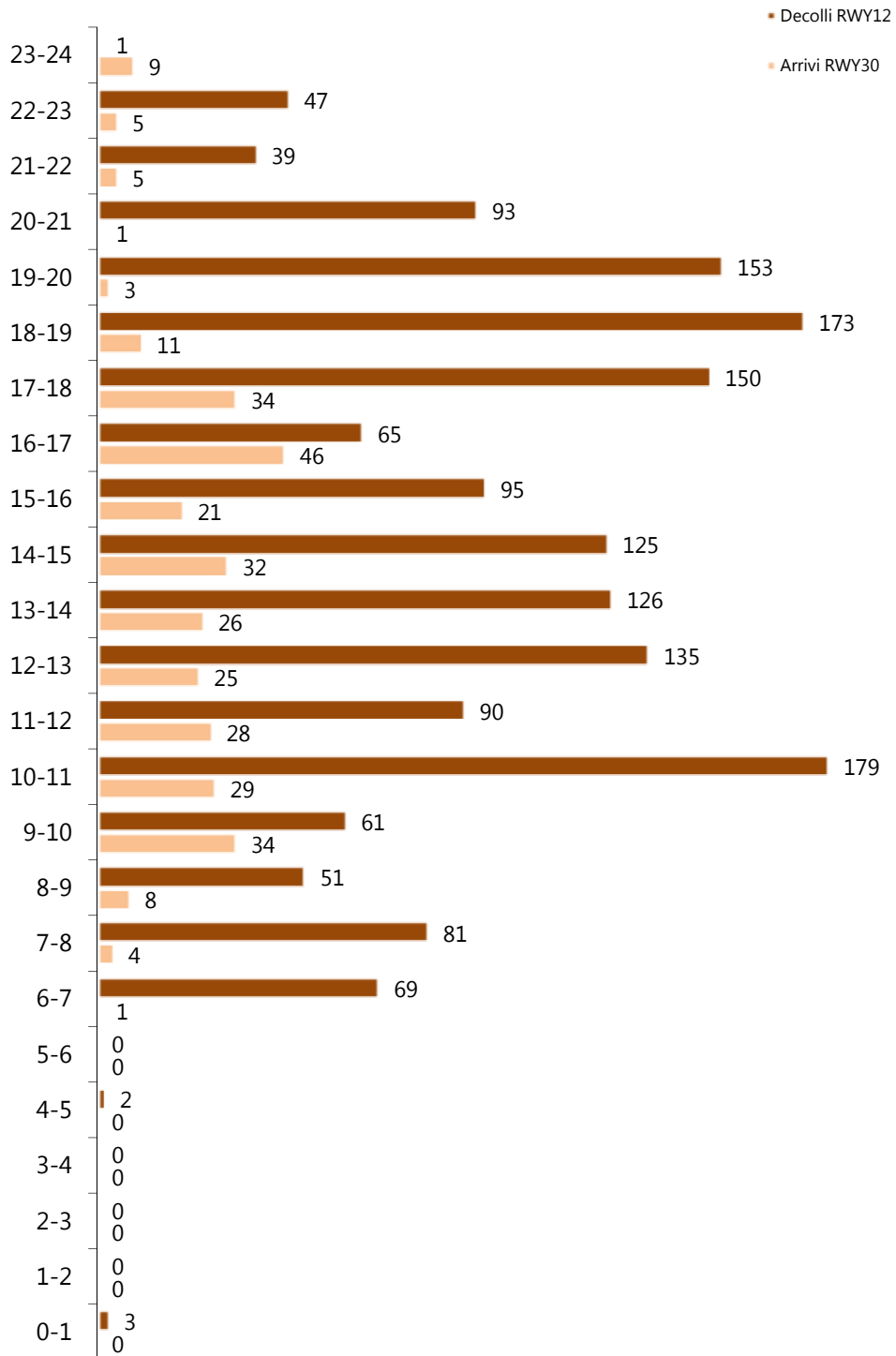
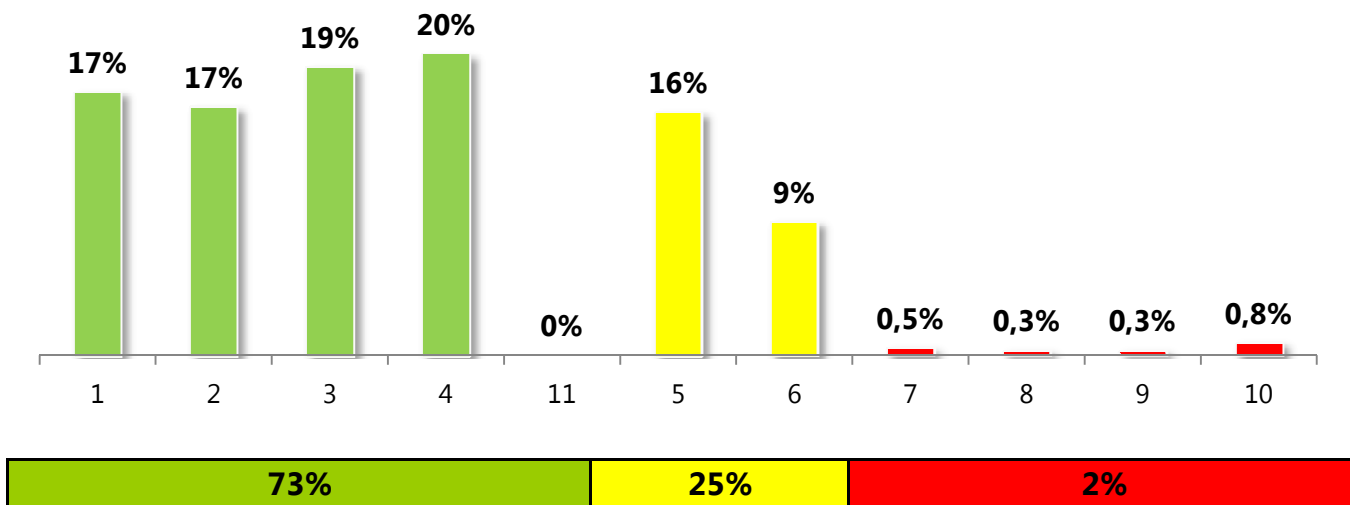



Grafico distribuzione decolli RWY12

Mese: Aprile 2017



 Rotte statistiche di distribuzione

 nominal ICP RWY12

