

MONITORAGGIO MENSILE VOLI

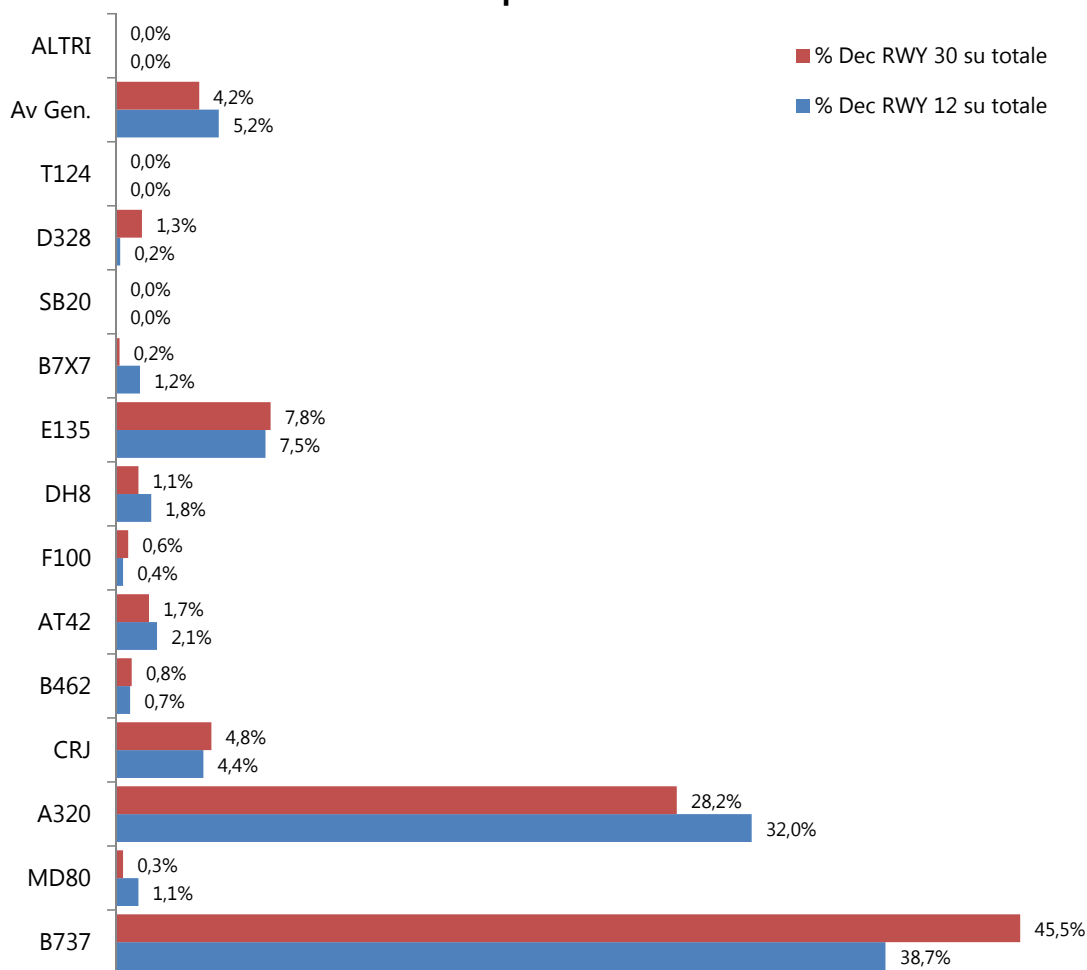
Mese: Aprile 2016

Data		MOVIMENTI		TOTALE MOV	RWY 12		TOTALE RWY12	RWY 30		TOTALE RWY30	% DEC RWY 12	% ARR RWY 30
		DEC	ARR		DEC	ARR		DEC	ARR			
01/04/16	ven	103	99	202	54	63	117	49	36	85	52%	36%
02/04/16	sab	70	73	143	16	47	63	54	26	80	23%	36%
03/04/16	dom	84	88	172	38	57	95	46	31	77	45%	35%
04/04/16	lun	103	102	205	96	101	197	7	1	8	93%	1%
05/04/16	mar	91	96	187	68	81	149	23	15	38	75%	16%
06/04/16	mer	102	94	196	54	68	122	48	26	74	53%	28%
07/04/16	gio	91	90	181	83	89	172	8	1	9	91%	1%
08/04/16	ven	98	100	198	18	48	66	80	52	132	18%	52%
09/04/16	sab	61	57	118	18	33	51	43	24	67	30%	42%
10/04/16	dom	81	89	170	64	88	152	17	1	18	79%	1%
11/04/16	lun	96	103	199	8	32	40	88	71	159	8%	69%
12/04/16	mar	83	84	167	52	76	128	30	8	38	63%	10%
13/04/16	mer	93	95	188	0	2	2	2	0	2	0%	0%
14/04/16	gio	74	91	165	49	64	113	25	27	52	66%	30%
15/04/16	ven	110	105	215	81	96	177	29	9	38	74%	9%
16/04/16	sab	73	70	143	39	53	92	34	17	51	53%	24%
17/04/16	dom	85	90	175	61	87	148	24	3	27	72%	3%
18/04/16	lun	97	100	197	39	71	110	58	29	87	40%	29%
19/04/16	mar	88	89	177	34	52	86	54	37	91	39%	42%
20/04/16	mer	73	90	163	69	84	153	4	6	10	95%	7%
21/04/16	gio	94	94	188	76	92	168	18	2	20	81%	2%
22/04/16	ven	97	98	195	74	91	165	23	7	30	76%	7%
23/04/16	sab	79	75	154	33	51	84	46	24	70	42%	32%
24/04/16	dom	82	131	213	41	52	93	43	79	122	50%	60%
25/04/16	lun	100	100	200	3	26	29	97	74	171	3%	74%
26/04/16	mar	92	93	185	26	51	77	66	42	108	28%	45%
27/04/16	mer	93	96	189	18	43	61	75	53	128	19%	55%
28/04/16	gio	68	86	154	62	86	148	6	0	6	91%	0%
29/04/16	ven	105	105	210	76	98	174	29	7	36	72%	7%
30/04/16	sab	79	73	152	60	72	132	19	1	20	76%	1%
01/05/16	dom	-	-	-	-	-	-	-	-	-	-	-
TOTALE		2.645	2.756	5.401	1.410	1.954	3.364	1.145	709	1.854	53%	26%

mese: Aprile 2016

GRUPPO	Descrizione	DEC RWY12	DEC RWY30	ARR RWY30	ARR RWY12	TOT	% / Tot
B737	<i>Boeing 737</i>	546	521	291	806	2.247	41,6%
MD80	<i>McDonnell Douglas MD-80</i>	16	4	3	17	40	0,7%
A320	<i>Airbus A318-A319-A320-A321</i>	451	323	189	596	1.613	29,9%
CRJ	<i>Canadair Regional Jet</i>	62	55	30	89	244	4,5%
B462	<i>British Aerospace 146 Freighter</i>	10	9	9	10	38	0,7%
AT42	<i>ATR 42-45-72</i>	29	19	12	34	98	1,8%
F100	<i>Fokker</i>	5	7	2	12	29	0,5%
DH8	<i>Dash</i>	25	13	6	33	80	1,5%
E135	<i>Embraer</i>	106	89	54	173	432	8,0%
B7X7	<i>B767 - B757 - A300 - A330</i>	17	2	6	10	41	0,8%
SB20	<i>SAAB 2000</i>	0	0	0	0	0	0,0%
D328	<i>Dornier 228-328</i>	3	15	1	17	38	0,7%
T124	<i>Antonov 26 - Tupolev</i>	0	0	0	0	0	0,0%
Av Gen.	<i>Aviazione Generale</i>	73	48	35	78	234	4,3%
ALTRI	-	67	40	71	79	267	4,9%
TOTALE		1.410	1.145	709	1.954	5.401	

% Movimento per direttrice di decollo



Il grafico mostra il contributo dei gruppi di a/m al totale dei decolli per le direttrici RWY12 e RWY30

MONITORAGGIO MENSILE VOLI NOTTURNI
(fascia oraria 23:00 - 06:00)

Mese: Aprile 2016

Data		MOVIMENTI		TOTALE MOV	RWY 12		TOTALE RWY12	RWY 30		TOTALE RWY30	% DEC RWY 12	% ARR RWY 30
		DEC	ARR		DEC	ARR		DEC	ARR			
01/04/16	ven	3	10	13	0	10	10	3	0	3	0%	0%
02/04/16	sab	0	7	7	0	6	6	0	1	1	#DIV/0!	14%
03/04/16	dom	1	8	9	0	6	6	1	2	3	0%	25%
04/04/16	lun	3	14	17	0	14	14	3	0	3	0%	0%
05/04/16	mar	4	10	14	0	4	4	4	6	10	0%	60%
06/04/16	mer	1	11	12	0	11	11	1	0	1	0%	0%
07/04/16	gio	4	12	16	2	12	14	2	0	2	50%	0%
08/04/16	ven	1	12	13	0	12	12	1	0	1	0%	0%
09/04/16	sab	3	8	11	0	8	8	3	0	3	0%	0%
10/04/16	dom	1	10	11	0	10	10	1	0	1	0%	0%
11/04/16	lun	3	13	16	0	12	12	3	1	4	0%	8%
12/04/16	mar	1	7	8	0	6	6	1	1	2	0%	14%
13/04/16	mer	4	14	18	0	2	2	2	12	14	0%	86%
14/04/16	gio	0	7	7	0	6	6	0	1	1	#DIV/0!	14%
15/04/16	ven	4	12	16	1	12	13	3	0	3	25%	0%
16/04/16	sab	2	7	9	0	6	6	2	1	3	0%	14%
17/04/16	dom	2	9	11	0	9	9	2	0	2	0%	0%
18/04/16	lun	3	14	17	0	14	14	3	0	3	0%	0%
19/04/16	mar	2	9	11	0	9	9	2	0	2	0%	0%
20/04/16	mer	1	8	9	0	7	7	1	1	2	0%	13%
21/04/16	gio	3	11	14	0	11	11	3	0	3	0%	0%
22/04/16	ven	2	9	11	1	9	10	1	0	1	50%	0%
23/04/16	sab	4	7	11	0	6	6	4	1	5	0%	14%
24/04/16	dom	1	11	12	0	11	11	1	0	1	0%	0%
25/04/16	lun	4	12	16	0	12	12	4	0	4	0%	0%
26/04/16	mar	0	9	9	0	9	9	0	0	0	#DIV/0!	0%
27/04/16	mer	2	11	13	0	11	11	2	0	2	0%	0%
28/04/16	gio	3	12	15	0	12	12	3	0	3	0%	0%
29/04/16	ven	3	14	17	0	13	13	3	1	4	0%	7%
30/04/16	sab	5	7	12	0	7	7	5	0	5	0%	0%
01/05/16	dom	-	-	-	-	-	-	-	-	-	-	-
TOTALE		70	305	375	4	277	281	64	28	92	6%	9%

% DEC rwy12/TOT	0-49%	50-69%	70-100%
-----------------	-------	---------------	----------------

Campi
tabella

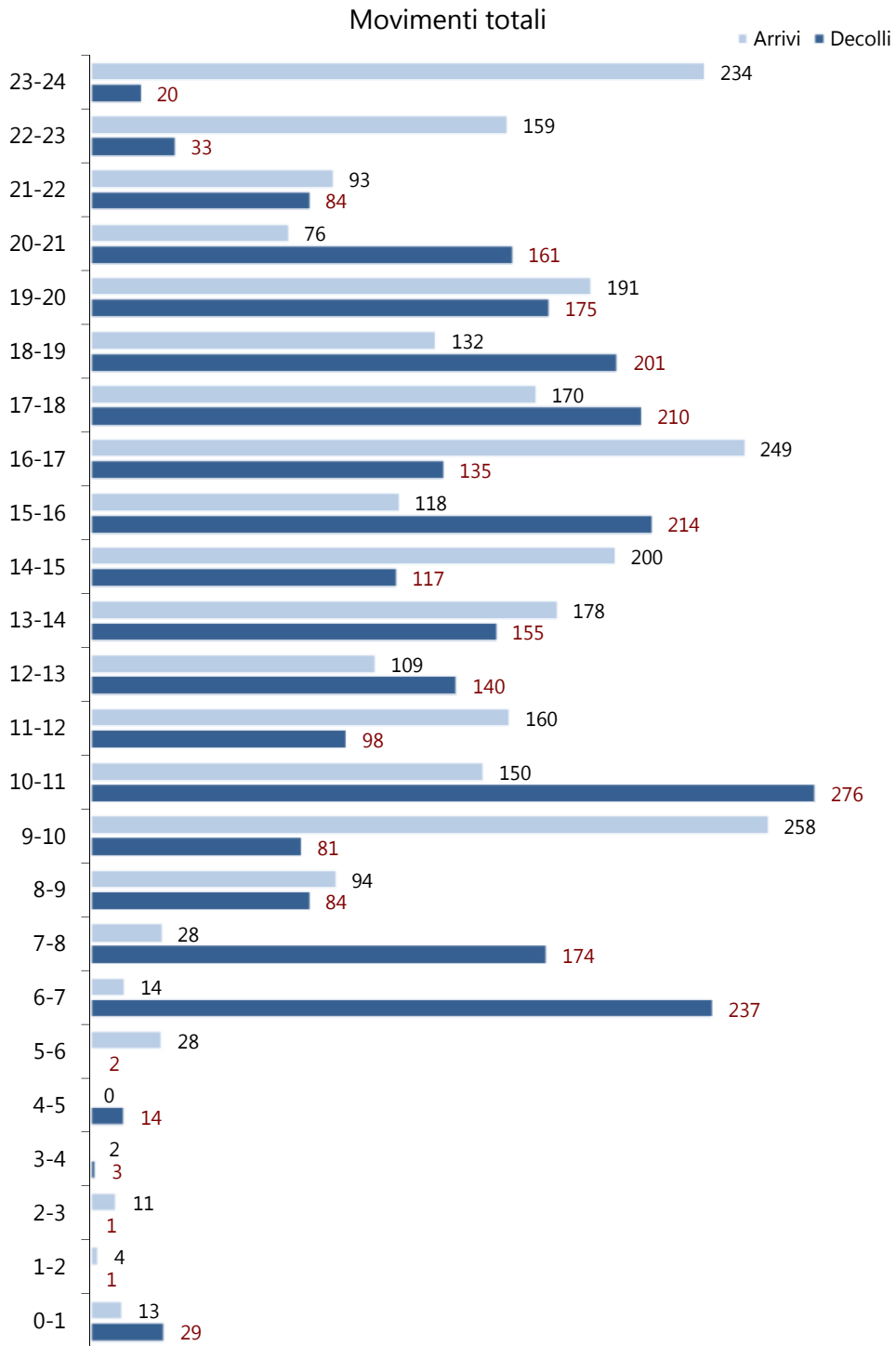
- DEC RWY12: decolli verso Bologna
- DEC RWY30: decolli verso Bargellino
- ARR RWY12: arrivi provenienti da Bargellino
- ARR RWY30: arrivi provenienti da Bologna

Tracce radar

- * = Tracce radar mancanti; dati di traffico da fonti commercial
- * = Tracce radar parziali (inferiori al 50%); completamento con dati commerciali

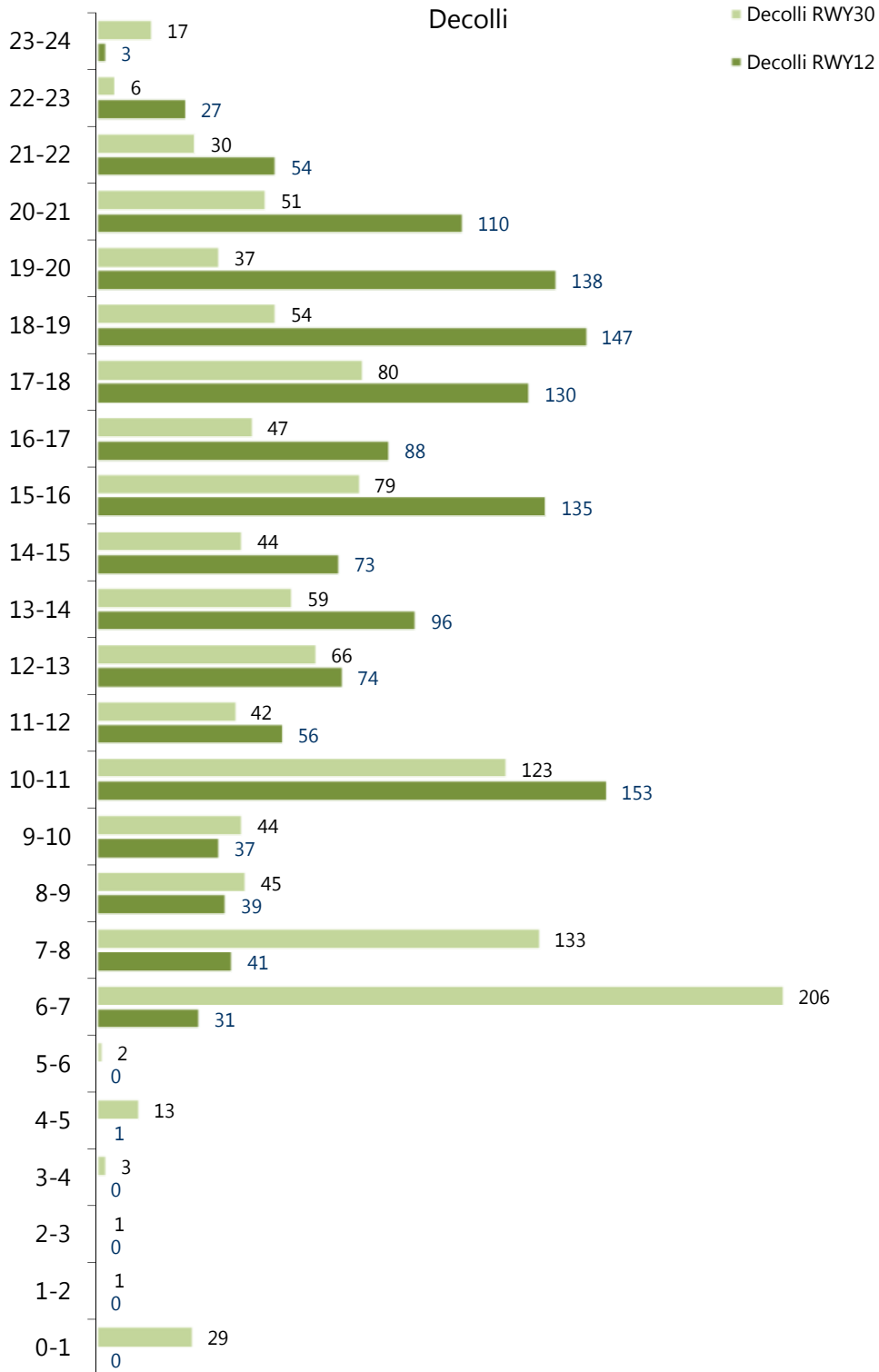
DISTRIBUZIONE MOVIMENTI PER FASCIA ORARIA

mese: Aprile 2016



DISTRIBUZIONE MOVIMENTI PER FASCIA ORARIA

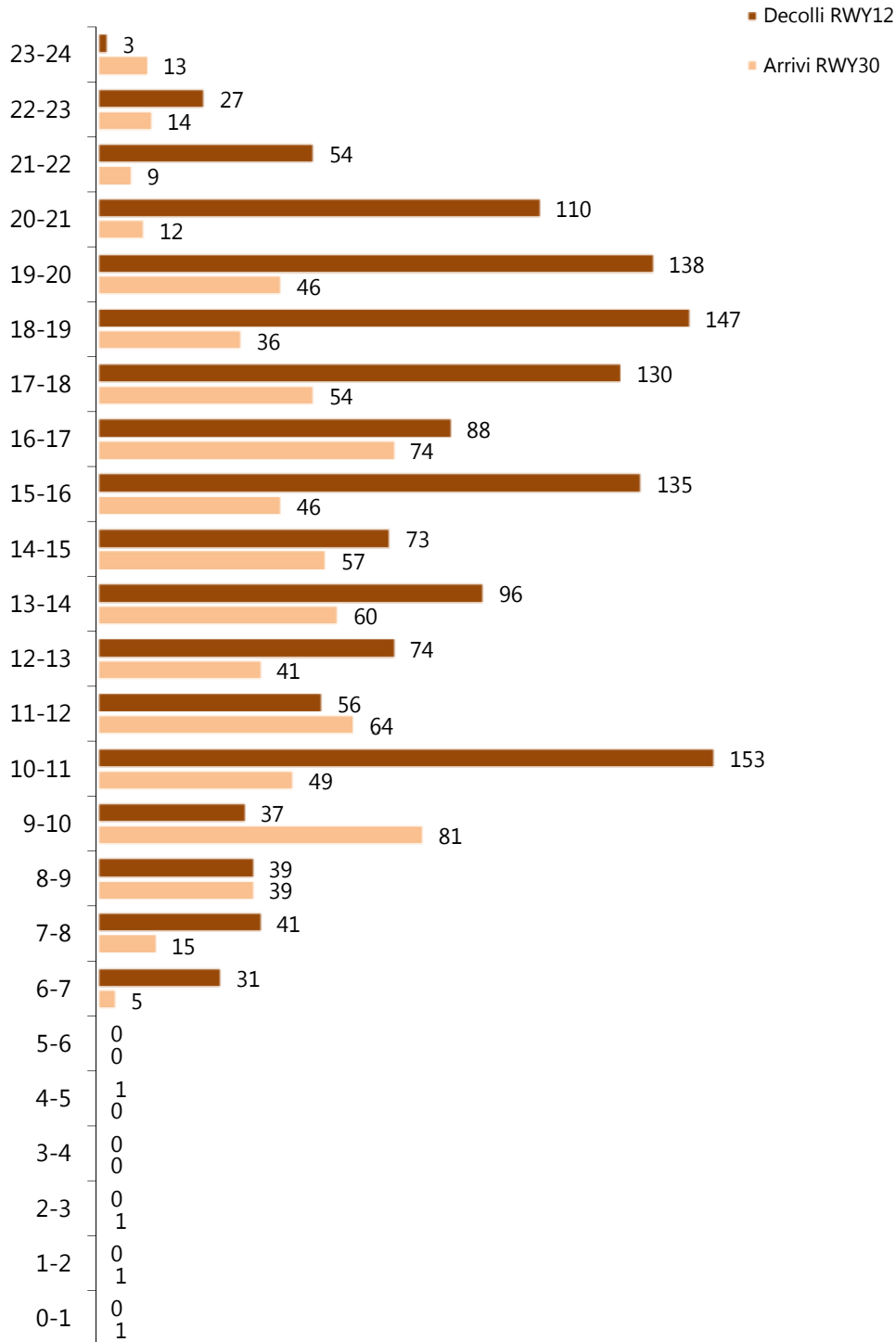
mese: Aprile 2016



DISTRIBUZIONE MOVIMENTI PER FASCIA ORARIA

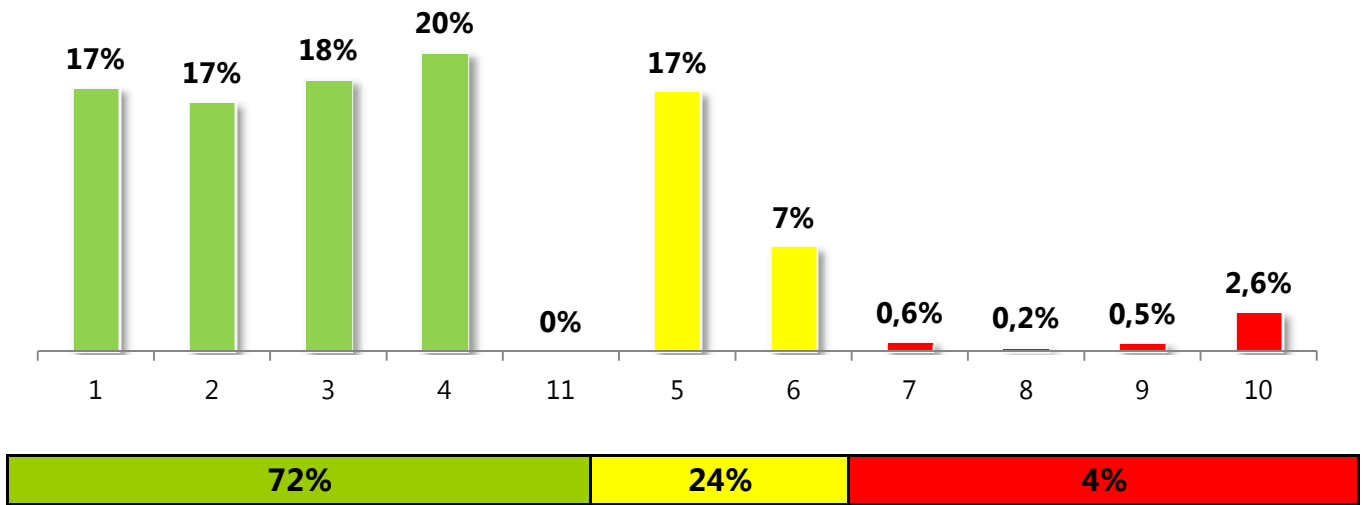
mese: Aprile 2016




Decolli RWY12 - Arrivi RWY30




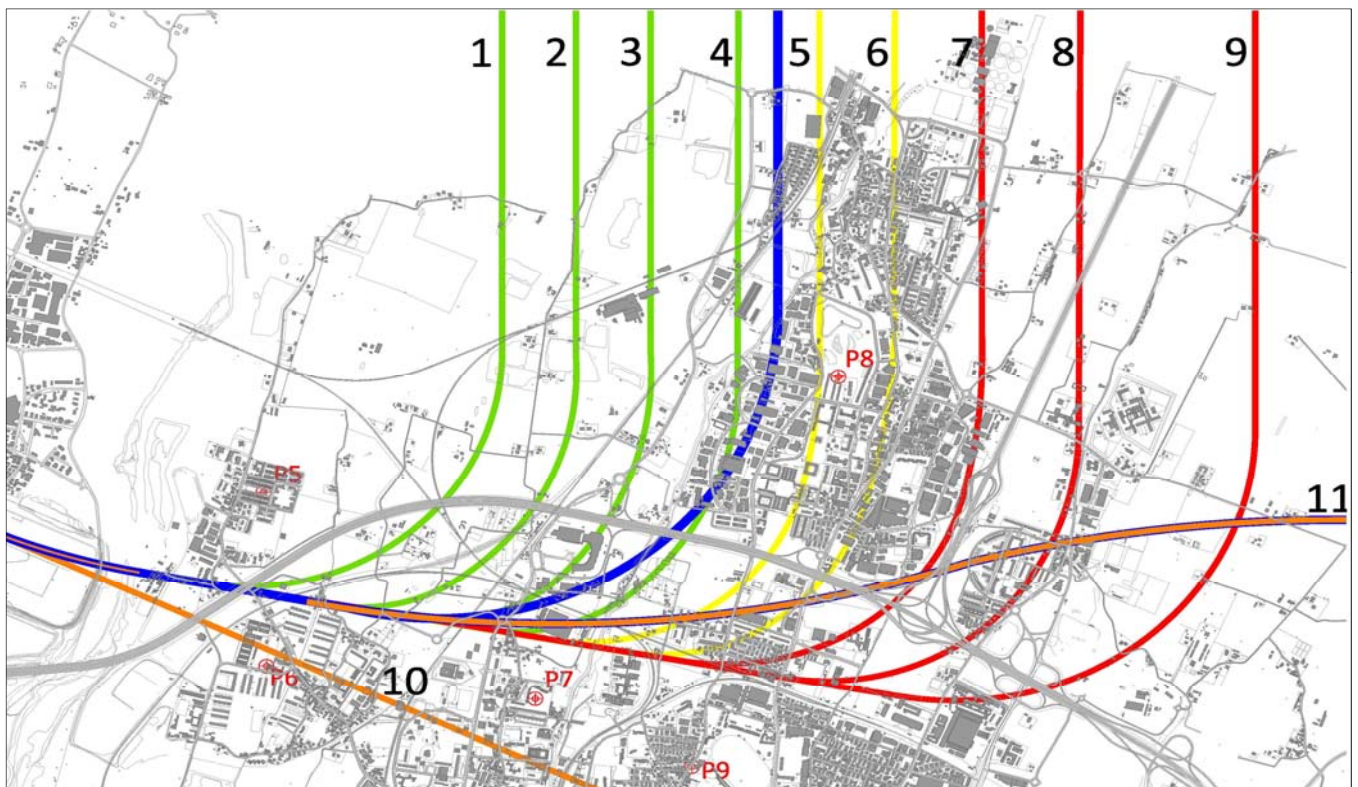
DISTRIBUZIONE STATISTICA DECOLLI RWY12

Mese: Aprile 2016



 Rotte statistiche di distribuzione
 Rotte statistiche di distribuzione
 Rotte statistiche di distribuzione

 nominal ICP RWY12



in base a quanto stabilito dalla ICP RWY12, la procedura è considerata correttamente eseguita se la traccia radar è assimilabile alle rotte statistiche 1 ÷ 4 - 11.