



**ALBERI DI NUOVO IMPIANTO**

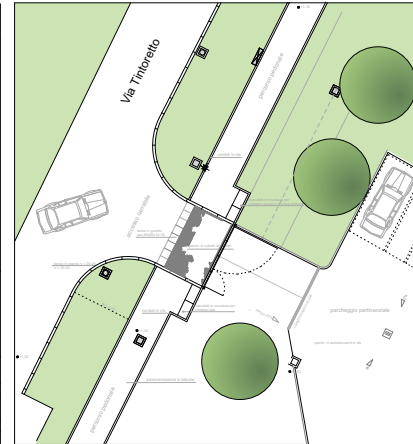
1 - Tilia intermedia
2 - Ginkgo biloba
3 - Pinus cembra "Charnicler"
4 - Pinus "Lanzan"
5 - Catalpa bignonioides
6 - Pinus armandi "Semp"
7 - Ulmus var "platanus"
8 - Quercus palustris
9 - Fraxinus excelsior "raywood"

**ARBUSTI DI NUOVO IMPIANTO**

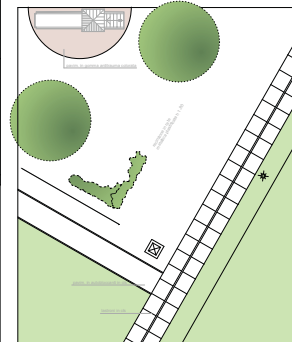
a - Philadelphus coronarius
b - Syringa vulgaris
c - Cotinus coccinea
d - Spiraea vanhouttei
e - Forsythia ovata
f - Cotinus coggygria "Royal purple"
g - Abelia grandiflora
h - Spiraea bumalda
i - Hypericum calycinum

**ALBERI ESISTENTI DA CONSERVARE**

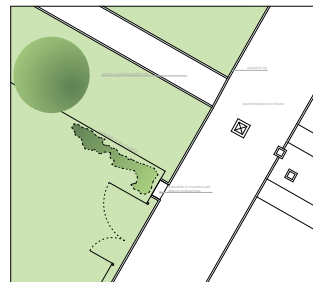
1 - Tilia intermedia
5 - Celtis australis
8 - Quercus robur



scala 1:100



scala 1:100



scala 1:100